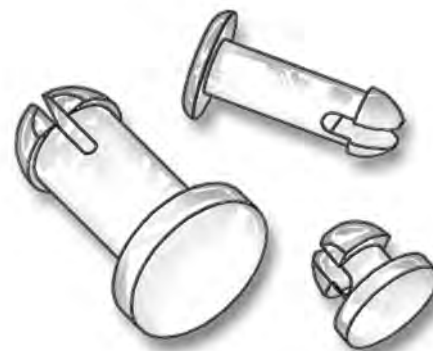
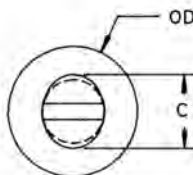
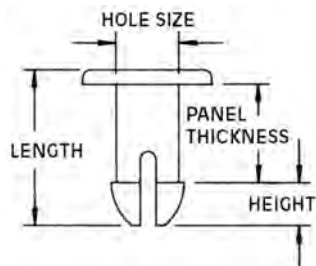
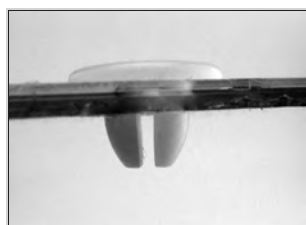


PANEL FASTENERS AND HOLE PLUGS

SECTION
VI



PUSH-IN-FASTENERS

Molded in Natural Nylon 6/6

| PART NUMBER | DESCRIPTION | OD | PANEL THICKNESS | HEIGHT | C | HOLE SIZE | LENGTH |
|-------------|-------------|---------------|-----------------|-------------|-------------|-------------|---------------|
| 27PIF0049 | PIF 49 | 11/32 (8,73) | .450 (11,43) | .160 (4,06) | .200 (5,08) | .160 (4,06) | .680 (17,27) |
| 27PIF0050 | PIF 50 | 11/32 (8,73) | .125 (3,18) | .137 (3,48) | .202 (5,13) | .165 (4,19) | .305 (7,75) |
| 27PIF0051 | PIF 51 | 11/32 (8,73) | .065 (1,65) | .137 (3,48) | .202 (5,13) | .165 (4,19) | .325 (8,26) |
| 27PIF0052 | PIF 52 | 11/32 (8,73) | .556 (14,12) | .153 (3,89) | .225 (5,72) | .180 (4,57) | .780 (19,81) |
| 27PIF0053 | PIF 53 | 11/32 (8,73) | .242 (6,15) | .174 (4,42) | .224 (5,69) | .175 (4,45) | .490 (12,45) |
| 27PIF0054 | PIF 54 | 11/32 (8,73) | .197 (5,00) | .185 (4,70) | .295 (7,49) | .255 (6,48) | .415 (10,54) |
| 27PIF0055 | PIF 55 | 11/32 (8,73) | .555 (14,08) | .145 (3,68) | .225 (5,71) | .180 (4,57) | .770 (19,56) |
| 27PIF0056 | PIF 56 | 9/64 (3,56) | .315 (8,00) | .075 (1,91) | .135 (3,43) | .095 (2,41) | .450 (11,43) |
| 27PIF0057 | PIF 57 | 7/16 (11,10) | .120 (3,05) | .236 (5,99) | .380 (9,65) | .305 (7,74) | .426 (10,82) |
| 27PIF0058 | PIF 58 | 15/32 (11,90) | .121 (3,07) | .153 (3,86) | .238 (6,05) | .200 (5,08) | .324 (8,24) |
| 27PIF0059 | PIF 59 | 3/16 (4,75) | .145 (3,69) | .065 (1,65) | .105 (2,66) | .090 (2,29) | .255 (6,48) |
| 27PIF0060 | PIF 60 | 15/32 (11,90) | .156 (3,89) | .125 (3,18) | .228 (5,79) | .200 (5,05) | .333 (8,46) |
| 27PIF0061 | PIF 61 | 11/32 (8,73) | .368 (9,35) | .105 (2,67) | .236 (5,99) | .203 (5,16) | .540 (13,72) |
| 27PIF0062 | PIF 62 | 25/64 (9,93) | 1.730 (43,94) | .222 (5,64) | .295 (7,49) | .230 (5,84) | 2.010 (51,05) |
| 27PIF0063 | PIF 63 | 29/64 (11,51) | .276 (7,01) | .142 (3,61) | .295 (7,49) | .240 (6,10) | .460 (11,68) |
| 27PIF0064 | PIF 64 | 29/64 (11,51) | .300 (7,62) | .170 (4,32) | .298 (7,57) | .243 (6,17) | .535 (13,59) |
| 27PIF0065 | PIF 65 | 19/32 (15,08) | .480 (12,19) | .175 (4,45) | .293 (7,44) | .245 (6,22) | .715 (18,16) |
| 27PIF0066 | PIF 66 | 29/64 (11,51) | .330 (8,38) | .187 (4,75) | .295 (7,49) | .240 (6,10) | .555 (14,10) |
| 27PIF0067 | PIF 67 | 1/2 (12,70) | .171 (4,34) | .187 (4,75) | .295 (7,49) | .260 (6,60) | .405 (10,29) |
| 27PIF0068 | PIF 68 | 11/16 (17,45) | .140 (3,56) | .243 (6,17) | .360 (9,14) | .290 (7,37) | .468 (11,89) |
| 27PIF0069* | PIF 69* | .312 (7,92) | .095 (2,41) | .075 (1,91) | .145 (3,68) | .095 (2,41) | .218 (5,54) |
| 27PIF0070 | PIF 70 | 19/32 (15,08) | .171 (4,34) | .187 (4,75) | .295 (7,49) | .260 (6,60) | .418 (10,62) |
| 27PIF0071 | PIF 71 | 19/32 (15,08) | .250 (6,35) | .187 (4,75) | .290 (7,37) | .245 (6,22) | .497 (12,62) |
| 27PIF0072 | PIF 72 | 19/32 (15,08) | .365 (9,27) | .187 (4,75) | .290 (7,37) | .245 (6,22) | .622 (15,80) |
| 27PIF0073 | PIF 73 | 11/32 (8,73) | .171 (4,34) | .187 (4,75) | .295 (7,49) | .260 (6,60) | .380 (9,65) |
| 27PIF0074 | PIF 74 | 19/32 (15,08) | .405 (10,29) | .160 (4,06) | .315 (8,00) | .275 (6,99) | .620 (15,75) |
| 27PIF0075 | PIF 75 | 1/4 (6,35) | .550 (13,97) | .135 (3,43) | .145 (3,68) | .112 (2,84) | .745 (18,92) |
| 27PIF0076 | PIF 76 | 15/32 (11,90) | .129 (3,28) | .148 (3,76) | .238 (6,05) | .197 (5,00) | .399 (10,13) |
| 27PIF0077 | PIF 77 | 15/64 (5,95) | .320 (8,13) | .084 (2,13) | .145 (3,68) | .118 (3,00) | .437 (11,10) |
| 27PIF0078 | PIF 78 | 13/32 (10,32) | .250 (6,35) | .100 (2,54) | .278 (7,06) | .217 (5,51) | .395 (10,03) |
| 27PIF0079 | PIF 79 | 9/16 (14,29) | .950 (24,13) | .174 (4,42) | .228 (5,79) | .172 (4,37) | 1.20 (30,48) |
| 27PIF0080 | PIF 80 | 3/8 (9,53) | 1.125 (28,58) | .17 (4,32) | .202 (5,13) | .165 (4,19) | 1.365 (34,67) |
| 27PIF0081 | PIF 81 | .343 (8,71) | .125 (3,18) | .137 (3,48) | .202 (5,13) | .165 (4,19) | .31 (7,87) |
| 27PIF0082 | PIF 82 | 11/16 (17,45) | .250 (6,35) | .258 (6,55) | .360 (9,14) | .290 (7,37) | .585 (14,86) |
| 27PIF0083 | PIF 83 | 1/2 (12,70) | .064 (1,63) | .138 (3,51) | .280 (7,11) | .243 (6,17) | .262 (6,65) |
| 27PIF0084 | PIF 84 | 1/2 (12,70) | .099 (2,51) | .168 (4,27) | .280 (7,11) | .245 (6,22) | .324 (8,23) |
| 27PIF0085 | PIF 85 | 1/2 (12,70) | .127 (3,23) | .185 (4,70) | .281 (7,14) | .241 (6,12) | .361 (9,17) |
| 27PIF0086 | PIF 86 | 1/2 (12,70) | .156 (3,96) | .170 (4,32) | .281 (7,14) | .242 (6,15) | .380 (9,65) |
| 27PIF0087 | PIF 87 | 1/2 (12,70) | .189 (4,80) | .156 (3,96) | .278 (7,06) | .241 (6,12) | .395 (10,03) |
| 27PIF0088 | PIF 88 | 1/2 (12,70) | .219 (5,56) | .175 (4,44) | .277 (7,04) | .239 (6,07) | .445 (11,30) |
| 27PIF0089 | PIF 89 | 1/2 (12,70) | .250 (6,35) | .175 (4,44) | .283 (7,19) | .241 (6,12) | .487 (12,37) |

PARTS WITH * HAVE NO SLOT -----"L" DIM.