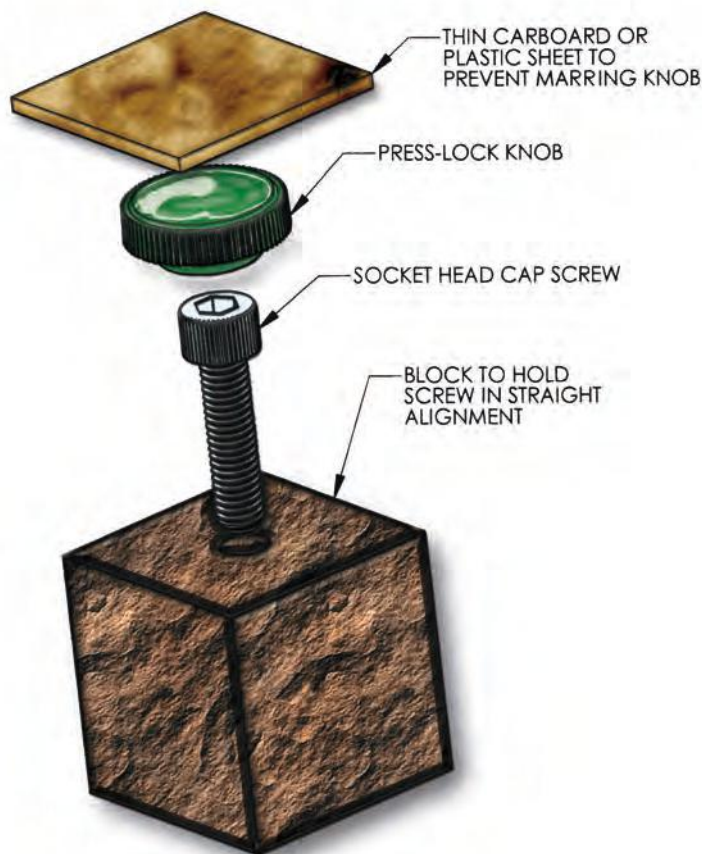


# PRESS-LOC THUMB SCREW KNOBS

SECTION

## EASY TO ASSEMBLE INSTANT THUMB SCREWS . . . . .

Micro Plastics' Press-Loc Thumb Screw Knobs can be assembled to the appropriate size hexagon socket head cap screw in various ways. Any device that provides a positive clamping force, such as a bench vise or arbor press will perform the assembly. The socket head cap screw must be aligned with the matching counterbore provided in the Press-Loc knob, place the assembly between the clamping jaws of the assembly device and provide enough force to press the knob completely over the head of the screw. A small section of thin cardboard or smooth plastic placed between the surface of the Press-Loc knob and the clamping jaw is recommended to prevent marring of the knob surface.



## PRESS-LOC ASSORTMENT KITS

### FLOWERETTE 144 PIECE

ASSORTMENT CONSISTS OF APPROX:  
 48 - 1/4"  
 48 - 5/16"  
 48 - 3/8"

Assorted Colors . . . . .

**O4ASO144FPL**

### WING 312 PIECE

ASSORTMENT CONSISTS OF APPROX:  
 72 - 1/4"  
 78 - 5/16"  
 72 - 3/8"  
 90 - #10

Assorted Colors . . . . .

**O4ASO312WPL**

### ROUND 704 PIECE

ASSORTMENT CONSISTS OF APPROX:  
 102 - 5/16"  
 102 - 1/4 X 1"  
 100 - 1/4 X 3/4"  
 100 - #10  
 100 - # 8  
 100 - # 6  
 100 - # 4

Assorted Colors . . . . .

**O4ASO704RPL**

### ROUND 380 PIECE

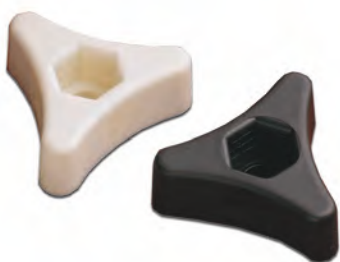
ASSORTMENT CONSISTS OF APPROX:  
 40 - 5/16"  
 40 - 1/4 X 1"  
 75 - 1/4 X 3/4"  
 75 - #10  
 50 - # 8  
 50 - # 6  
 50 - # 4

Assorted Colors . . . . .

**O4ASO380RPL**

## HEX PRESS-LOC TRI KNOB

Micro Plastics' nylon press-loc tri knobs are designed to press on to 1/4" standard steel hex nuts and 1/4" hex head cap screws. Knobs are easily assembled by pressing the steel nut or screw into the plastic tri knob. Available in natural and black nylon 6/6.



| PART NUMBER | SCREW SIZE | OD    | COLOR   |
|-------------|------------|-------|---------|
| 29TL250N    | 1/4        | 1 5/8 | NATURAL |
| 29TL250B    | 1/4        | 1 5/8 | BLACK   |
| 29TL250WT   | 1/4        | 1 5/8 | WHITE   |

