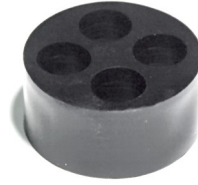


Multi-Hole Insert - For PG Threaded Glands - TPE - BLACK



Part No.	Thread	No. of Holes	Hole Size (mm)	
DEL8901	M12	4	2	
DEL8911	M16	2	4	
DEL8921	M20	2	6	
DEL8922	M20	4	5	
DEL8931	M25	2	6	
DEL8932	M25	3	7	Min. Temperature: -30°C Max. Temperature: 100°C
DEL8933	M25	4	6.5	
DEL8934	M25	6	4	
DEL8941	M32	4	8	
DEL8942	M32	6	6	
DEL8951	M40	4	10	
DEL8952	M40	5	8.5	
DEL8953	M40	8	6.5	

Part No.	Thread	Cable Holes	Min. Cable Size (mm)	Max. Cable Size (mm)	O.D. (mm)	H (mm)
40624-4G	M25	4	5.6	7.3	22.8	11.2
40624-5F	M25	5	4.6	6	22.8	11.2
40624-6D	M25	6	3.6	5.2	22.8	11.2
40625-2B	M32	2	5.1	6.5	30.4	14.4
40625-3D	M32	3	7.7	10	30.4	14.4
40625-4C	M32	4	3.8	5.2	30.4	14.4
40625-4E	M32	4	7	9	30.4	14.4
40625-5D	M32	5	6	8	30.4	14.4
40625-6C	M32	6	5.6	7	30.4	14.4
40625-6E	M32	6	7	9	30.4	14.4