

“Stay Connected” with



HEYware Products

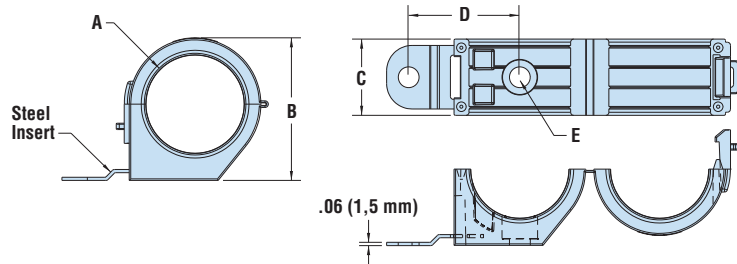
a PennEngineering® Company



- Available in three different sizes to accommodate a variety of cables ranging from 1.5” to 3” in diameter.
- Unique design allows for installation of Heavy Duty Lockit P Clamps to be independent of cable installation.
- Release feature allows for serviceability or field maintenance.
- Inner diameter ribs offer some axial retention.
- Steel mounting tab provides reliable, long-lasting hold in harsh environments.
- Steel Tab Accepts maximum screw size of 3/8”.
- Extra mounting hole inside of clamp provides anti-rotational benefit.
- Anti-rotation hole accepts maximum screw size of 3/8”, except for HDLCC 2000, which accepts 5/16”.

## Heyco® Heavy Duty Lockit P Clamps Steel Mounting Tab

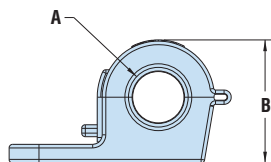
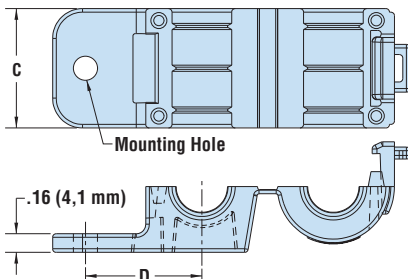
| MOUNTING HOLE DIA. |      | MAX BUNDLE DIA. A |      | PART NO.                       |                     | DESCRIPTION    | PART DIMENSIONS  |      |                 |      |                             |      |                    |      |
|--------------------|------|-------------------|------|--------------------------------|---------------------|----------------|------------------|------|-----------------|------|-----------------------------|------|--------------------|------|
| in.                | mm.  | in.               | mm.  | Black Zinc Plated Steel Insert | Black 304 SS Insert |                | Overall Height B |      | Overall Width C |      | Mounting Center to Center D |      | Counterbore Dia. E |      |
| 0.41               | 10,4 | 1.5               | 38,1 | 15474B                         | 25474B              | HDLCC 1500-410 | 2.3              | 57,4 | 1.5             | 38,1 | 1.90                        | 48,3 | 0.82               | 20,8 |
|                    |      | 2.0               | 50,8 | 15478B                         | 25478B              | HDLCC 2000-410 | 2.8              | 71,6 |                 |      | 2.19                        | 55,6 | 0.70               | 17,8 |
|                    |      | 3.0               | 76,2 | 15482B                         | 25482B              | HDLCC 3000-410 | 3.8              | 97,3 |                 |      | 2.68                        | 68,1 | 0.82               | 20,8 |



- Available in multiple sizes to accommodate a variety of cables ranging from .38” to 1” in diameter.
- Unique design allows for installation of Heavy Duty Lockit P Clamps to be independent of cable installation.
- Release feature allows for serviceability or field maintenance.
- Inner diameter ribs offer some axial retention.

## Heyco® Heavy Duty Nylon Lockit P Clamps

| MOUNTING HOLE DIA. |     | MAX BUNDLE DIA. A |      | PART NO.            |                               |                    | DESCRIPTION    | PART DIMENSIONS  |      |         |      |   |      |
|--------------------|-----|-------------------|------|---------------------|-------------------------------|--------------------|----------------|------------------|------|---------|------|---|------|
| in.                | mm. | in.               | mm.  | Black All Nylon 6/6 | Black All Nylon 6/6 V-0 Rated | Gray All Nylon 6/6 |                | Overall Height B |      | Width C |      | Mounting Hole Center to Cable Dia. Center |      |
| 0.20               | 5,1 | 0.38              | 9,7  | 15450B              | 15450F                        | 15425              | HDLCC 375-201  | 0.9              | 23,6 | 1.00    | 25,4 | 0.87                                      | 22,1 |
| 0.27               | 6,9 |                   |      | 15451B              | 15451F                        | 15426              | HDLCC 375-265  |                  |      |         |      |   |      |
| 0.20               | 5,1 | 0.50              | 12,7 | 15454B              | 15454F                        | 15428              | HDLCC 500-201  | 1.1              | 26,9 | 1.00    | 25,4 | 0.98                                      | 25,0 |
| 0.27               | 6,9 |                   |      | 15455B              | 15455F                        | 15430              | HDLCC 500-265  |                  |      |         |      |   |      |
| 0.20               | 5,1 | 0.63              | 16,0 | 15458B              | 15458F                        | 15432              | HDLCC 625-201  | 1.2              | 29,7 | 1.00    | 25,4 | 1.04                                      | 26,4 |
| 0.27               | 6,9 |                   |      | 15459B              | 15459F                        | 15433              | HDLCC 625-265  |                  |      |         |      |   |      |
| 0.27               | 6,9 | 0.75              | 19,1 | 15462B              | 15462F                        | 15436              | HDLCC 750-265  | 1.3              | 33,0 | 1.00    | 25,4 | 1.21                                      | 30,7 |
| 0.33               | 8,4 |                   |      | 15463B              | 15463F                        | 15437              | HDLCC 750-330  |                  |      |         |      |   |      |
| 0.27               | 6,9 | 0.88              | 22,4 | 15466B              | 15466F                        | 15439              | HDLCC 875-265  | 1.4              | 35,8 | 1.25    | 31,8 | 1.27                                      | 32,3 |
| 0.33               | 8,4 |                   |      | 15467B              | 15467F                        | 15440              | HDLCC 875-330  |                  |      |         |      |   |      |
| 0.27               | 6,9 | 1.00              | 25,4 | 15470B              | 15470F                        | 15445              | HDLCC 1000-265 | 1.5              | 39,1 | 1.00    | 25,4 | 1.36                                      | 34,5 |
| 0.33               | 8,4 |                   |      | 15471B              | 15471F                        | 15446              | HDLCC 1000-330 |                  |      |         |      |   |      |



|                     |   |
|---------------------|---|
| Material            | Nylon 6/6<br>Steel Insert – Zinc Plated<br>Stainless Steel Insert – 304 Stainless Steel |
| Flammability Rating | UL 94V2   |
| Temperature Range   | 32°F (0°C) to 221°F (105°C)   |