

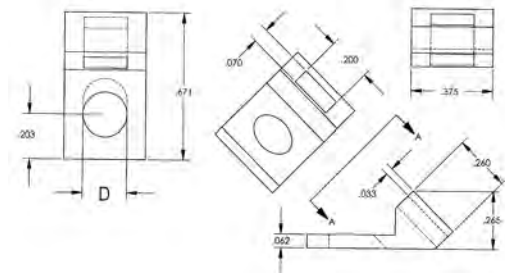
# WIRE HANDLING HARDWARE

## SECTION VII

### WIRE TIE MOUNTING BRACKET

Molded in **Natural Nylon 6/6**

Wire Tie Mounting Brackets are for use with ties up to .190 wide and .060 thick. This series of brackets cover mounting screw sizes from #4 through #10. The compact design is ideal for limited space requirements.



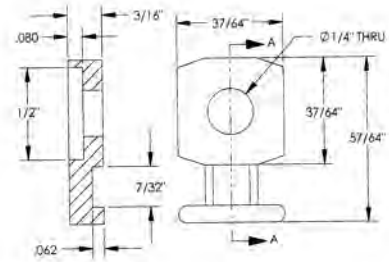
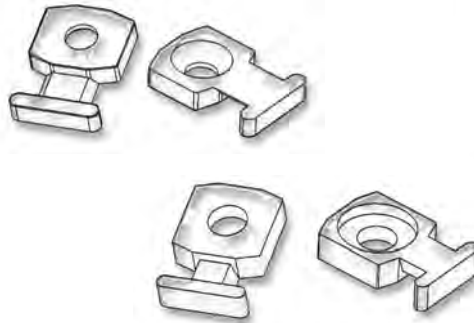
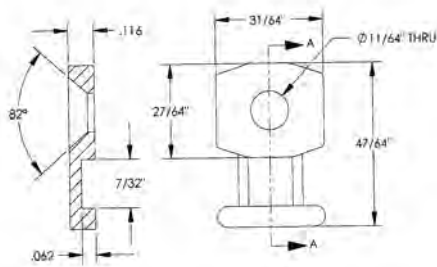
ITEM NUMBER	D	
23TA207128	.128	(3,25)
23TA207140	.140	(3,56)
23TA207167	.167	(4,24)
23TA207203	.203	(5,16)



### SCREW TABS

Molded in **Natural Nylon 6/6**

Screw Tabs are designed for use where space is limited. Tabs are fastened with a screw to provide a low profile assembly.



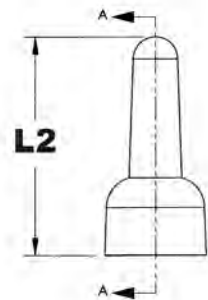
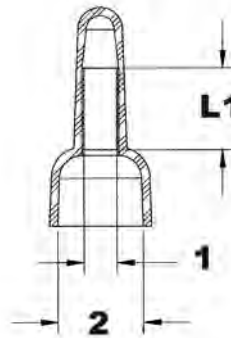
ITEM NUMBER	DESCRIPTION
23TA00200	#8 SCREW TAB

ITEM NUMBER	DESCRIPTION
23TA00250	1/4" (6,35) SCREW TAB

### CLOSED END WIRE CONNECTORS

PARTS ARE PACKAGED 100 PIECES PER BAG • PURCHASE IN PACKAGED QUANTITIES ONLY

- Material: UL approved NYLON 66, 94V-2
- Nylon insulated close-end wire connector
- To apply, insert pre-stripped wires into connector tube and crimp it with crimping tool to hold wires firmly even in vibration.
- Insert is copper - tin plated



ITEM NO.	L1	L2	1	2	PACKAGING	AWG
NM22WC01	.275" 6.9mm	.787" 20mm	.094" 2.4mm	.307" 7.8mm	100 pcs	22-16
NM22WC02	.295" 7.5mm	.787" 20mm	.118" 3.0mm	.307" 7.8mm	100 pcs	16-14
NM22WC05	.335" 8.5mm	1.004" 25.5mm	.165" 4.1mm	.409" 10.3mm	100 pcs	12-10
NM22WC08*	.374" 9.5mm	1.071" 27.2mm	.185" 4.7mm	.472" 12.0mm	100 pcs	8

\* NOT UL LISTED