

WASHERS, SHOULDER WASHERS & SCREW INSULATORS

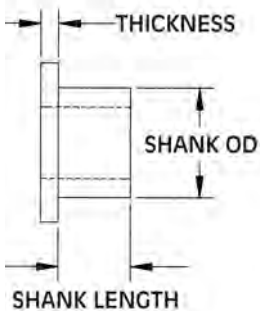
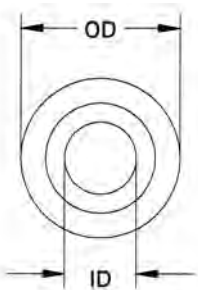
SECTION IV

SHOULDER WASHERS

Molded in **Natural Nylon 6/6**

Nylon Shoulder Washers are suitable for a large variety of insulation and mechanical applications.

- ▶ THEY INSULATE ▶ REDUCE VIBRATION ▶ ACT AS SPACERS AND GUIDES ▶ STRONG AND CORROSION RESISTANT ▶ CAN BE USED AS SEAL IN SOME APPLICATIONS



ITEM NUMBER	DESCRIPTION	SHANK LENGTH		OD		THICKNESS		SHANK OD		ID
12SWS1239	SWS 1239	.188	(4,78)	.625	(15,88)	.032	(0,81)	.260	(6,60)	.200 (5,08)
12SWS1240	SWS 1240	3/16	(4,76)	.630	(16,00)	1/16	(1,59)	.375	(9,53)	.254 (6,45)
12SWS1241	SWS 1241	.175	(4,45)	.650	(16,51)	.125	(3,18)	.490	(12,45)	.385 (9,78)
12SWS1242	SWS 1242	.563	(14,30)	.625	(15,88)	.125	(3,18)	.485	(12,32)	.390 (9,91)
12SWS1243	SWS 1243	.748	(19,00)	.630	(16,00)	.055	(1,40)	.500	(12,70)	.437 (11,10)
12SWS1244	SWS 1244	.090	(2,29)	.635	(16,13)	.042	(1,07)	.380	(9,65)	.216 (5,49)
12SWS1245	SWS 1245	.500	(12,70)	1.000	(25,40)	.130	(3,30)	.493	(12,52)	.280 (7,11)
12SWS1247	SWS 1247	.375	(9,53)	.625	(15,88)	.063	(1,60)	.500	(12,70)	.380 (9,65)
12SWS1248	SWS 1248	.230	(5,84)	.690	(17,52)	.060	(1,52)	.438	(11,12)	.320 (8,12)
12SWS2100	SWS 2100	.250	(6,35)	.688	(17,47)	.062	(1,57)	.562	(14,27)	.437 (11,09)
12SWS2101	SWS 2101	.062	(1,57)	.562	(14,27)	.062	(1,57)	.365	(9,27)	.215 (5,46)
12SWS2102	SWS 2102	.220	(5,59)	.620	(15,75)	.057	(1,45)	.366	(9,30)	.310 (7,87)
12SWS2104	SWS 2104	.225	(5,71)	1/2	(12,70)	.035	(0,89)	.370	(9,40)	.310 (7,87)
12SWS2105	SWS 2105	.125	(3,17)	.750	(19,05)	.062	(1,57)	.375	(9,52)	.312 (7,92)
12SWS2106	SWS 2106	.187	(4,74)	.691	(17,55)	.067	(1,70)	.363	(9,22)	.256 (6,50)
12SWS2107	SWS 2107	.246	(6,24)	.630	(16,00)	.197	(5,00)	.291	(7,39)	.181 (4,59)
12SWS2495	SWS 2495	.142	(3,60)	.375	(9,52)	.063	(1,60)	.232	(5,89)	.139 (3,53)
12SWS2496	SWS 2496	.150	(3,81)	.343	(8,71)	.263	(6,68)	.232	(5,89)	.130 (3,30)
12SWS2497	SWS 2497	.150	(3,81)	.343	(8,71)	.340	(8,64)	.232	(5,89)	.130 (3,30)
12SWS2498	SWS 2498	.513	(13,03)	.687	(17,44)	.263	(6,68)	.412	(10,46)	.325 (8,26)
12SWS2499	SWS 2499	3/8	(9,53)	.513	(13,03)	1/16	(1,59)	.312	(7,93)	.191 (4,85)
12SWS2500	SWS 2500	1/32	(7,94)	.510	(12,95)	3/32	(2,38)	.250	(6,35)	.156 (3,96)
12SWS2501	SWS 2501	3/8	(9,53)	.513	(13,03)	1/16	(1,59)	.312	(7,93)	.261 (6,63)
12SWS2502	SWS 2502	1/8	(3,18)	.467	(11,86)	3/64	(1,19)	.312	(7,93)	.255 (6,48)
12SWS2503	SWS 2503	1/32	(0,79)	.625	(15,88)	1/16	(1,59)	.375	(9,53)	.295 (7,49)
12SWS2504	SWS 2504	1/8	(3,18)	.687	(17,45)	1/8	(3,18)	.437	(11,10)	.328 (8,33)
12SWS2505	SWS 2505	1/32	(0,79)	.500	(12,70)	1/16	(1,59)	.312	(7,93)	.252 (6,40)
12SWS2506	SWS 2506	5/16	(7,94)	.625	(15,88)	1/16	(1,59)	.500	(12,70)	.380 (9,65)
12SWS2507	SWS 2507	1/8	(3,18)	.600	(15,24)	1/8	(3,18)	.370	(7,93)	.250 (6,35)
12SWS2508	SWS 2508	3/16	(4,76)	.674	(17,12)	3/32	(2,38)	.500	(12,70)	.290 (7,36)
12SWS2509	SWS 2509	1-7/64	(28,17)	.635	(16,13)	9/64	(3,58)	.425	(10,80)	.201 (5,11)
12SWS2510	SWS 2510	3/8	(9,53)	.687	(17,45)	3/8	(9,53)	.359	(9,12)	.263 (6,68)
12SWS2511	SWS 2511	5/16	(7,94)	.625	(15,88)	1/16	(1,59)	.500	(12,70)	.395 (10,03)
12SWS2512	SWS 2512	.334	(8,48)	.687	(17,45)	.046	(1,17)	.348	(8,84)	.263 (6,68)
12SWS2513	SWS 2513	1/8	(3,18)	.703	(17,86)	1/16	(1,59)	.437	(11,10)	.335 (8,51)
12SWS2515	SWS 2515	.420	(10,67)	.710	(18,03)	.075	(1,90)	.470	(11,94)	.420 (10,67)
12SWS2516	SWS 2516	.280	(7,11)	.701	(17,80)	.062	(1,57)	.305	(7,75)	.258 (6,55)
12SWS2517	SWS 2517	.110	(2,79)	.710	(18,03)	.190	(4,83)	.338	(8,59)	.255 (6,48)
12SWS2518	SWS 2518	.146	(3,71)	.692	(17,58)	.051	(1,30)	.417	(10,59)	.249 (6,32)
12SWS2519	SWS 2519	.145	(3,68)	.736	(18,69)	.125	(3,18)	.371	(9,42)	.168 (4,27)
12SWS2520	SWS 2520	5/32	(3,97)	.725	(18,41)	5/32	(3,97)	.445	(11,30)	.375 (9,53)
12SWS2521	SWS 2521	5/32	(3,97)	.720	(18,29)	1/16	(1,59)	.485	(12,32)	.270 (6,86)
12SWS2522	SWS 2522	.187	(4,75)	.700	(17,78)	.225	(5,72)	.375	(9,53)	.268 (6,81)
12SWS2523	SWS 2523	.062	(1,59)	.750	(19,05)	.188	(4,78)	.500	(12,70)	.250 (6,35)
12SWS2524	SWS 2524	.150	(3,81)	.730	(18,54)	.125	(3,18)	.500	(12,70)	.315 (8,00)
12SWS2525	SWS 2525	11/32	(3,43)	.730	(18,54)	1/4	(6,35)	.372	(9,44)	.257 (6,52)
12SWS2526	SWS 2526	.500	(12,70)	.688	(17,48)	.062	(1,58)	.562	(14,27)	.437 (11,10)
12SWS2527	SWS 2527	11/16	(17,46)	.750	(19,05)	1/16	(1,59)	.438	(11,13)	.313 (7,95)
12SWS2528	SWS 2528	3/16	(4,76)	.743	(18,87)	1/16	(1,59)	.443	(11,25)	.375 (9,53)

