

WASHERS, SHOULDER WASHERS & SCREW INSULATORS

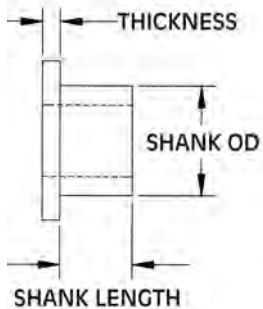
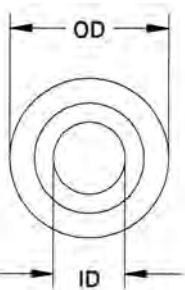
SECTION IV

SHOULDER WASHERS

Molded in **Natural Nylon 6/6**

Nylon Shoulder Washers are suitable for a large variety of insulation and mechanical applications.

- ▶ THEY INSULATE ▶ REDUCE VIBRATION ▶ ACT AS SPACERS AND GUIDES ▶ STRONG AND CORROSION RESISTANT ▶ CAN BE USED AS SEAL IN SOME APPLICATIONS



ITEM NUMBER	DESCRIPTION	SHANK LENGTH		OD		THICKNESS		SHANK OD		ID	
12SWS1084	SWS 1084	3/64	(1,19)	.500	(12,70)	1/32	(0,79)	.318	(8,08)	.141	(3,58)
12SWS1086	SWS 1086	1/16	(1,59)	.500	(12,70)	1/16	(1,59)	.330	(8,38)	.150	(3,81)
12SWS1087	SWS 1087	.110	(2,79)	.630	(16,00)	.034	(0,86)	.322	(8,18)	.255	(6,48)
12SWS1088	SWS 1088	.109	(2,77)	.500	(12,70)	1/16	(1,59)	.240	(6,10)	.138	(3,51)
12SWS1089	SWS 1089	.050	(1,27)	.505	(12,83)	.050	(1,27)	.410	(10,41)	.370	(9,40)
12SWS1090	SWS 1090	3/64	(1,19)	.518	(13,16)	1/32	(0,79)	.305	(7,75)	.080	(2,03)
12SWS1092	SWS 1092	.075	(1,91)	.500	(12,70)	.175	(4,45)	.300	(7,62)	.195	(4,95)
12SWS1093	SWS 1093	.445	(11,30)	.500	(12,70)	.055	(1,39)	.310	(7,87)	.205	(5,20)
12SWS1094	SWS 1094	.071	(1,80)	.787	(19,99)	.039	(0,99)	.390	(9,91)	.315	(8,00)
12SWS1095	SWS 1095	1/8	(3,18)	.502	(12,75)	1/32	(0,79)	.399	(10,13)	.349	(8,86)
12SWS1096	SWS 1096	.375	(9,53)	.437	(11,10)	.055	(1,40)	.310	(7,87)	.196	(4,98)
12SWS1097	SWS 1097	.071	(1,80)	.787	(19,99)	.039	(0,99)	.390	(9,91)	.350	(8,89)
12SWS1098	SWS 1098	9/64	(3,58)	.515	(13,08)	1/16	(1,59)	.312	(7,93)	.260	(6,60)
12SWS1099	SWS 1099	.085	(2,16)	.880	(22,35)	.058	(1,47)	.312	(7,92)	.260	(6,60)
12SWS1100	SWS 1100	15/16	(23,81)	.540	(13,72)	.065	(1,65)	.370	(9,40)	.260	(6,60)
12SWS1101	SWS 1101	3/32	(2,38)	.500	(12,70)	1/32	(0,79)	.282	(7,16)	.234	(5,94)
12SWS1102	SWS 1102	.050	(1,27)	.750	(19,05)	.100	(2,54)	.280	(7,11)	.200	(5,08)
12SWS1103	SWS 1103	.157	(3,98)	.591	(15,01)	.039	(0,99)	.291	(7,39)	.236	(5,99)
12SWS1115	SWS 1115	.500	(12,70)	.525	(15,88)	.063	(1,60)	.370	(9,40)	.267	(6,78)
12SWS1145	SWS 1145	.030	(0,76)	.562	(14,28)	.030	(0,76)	.400	(10,16)	.318	(8,08)
12SWS1146	SWS 1146	.375	(9,52)	.700	(17,78)	.062	(1,57)	.395	(10,03)	.318	(8,07)
12SWS1148	SWS 1148	.440	(11,18)	.470	(11,94)	.060	(1,52)	.344	(8,74)	.219	(5,56)
12SWS1149	SWS 1149	.188	(4,78)	.562	(14,27)	.731	(18,57)	.388	(9,86)	.290	(7,37)
12SWS1150	SWS 1150	3/64	(1,19)	.562	(14,28)	3/64	(1,19)	.300	(7,62)	.260	(6,60)
12SWS1151	SWS 1151	.104	(2,64)	.562	(14,28)	.046	(1,17)	.300	(7,62)	.260	(6,60)
12SWS1152	SWS 1152	.500	(12,70)	.525	(13,33)	.063	(1,60)	.370	(9,40)	.265	(6,73)
12SWS1153	SWS 1153	.040	(1,02)	.560	(14,22)	.060	(1,52)	.312	(7,92)	.257	(6,53)
12SWS1154	SWS 1154	.050	(1,27)	.516	(13,11)	.060	(1,52)	.345	(8,76)	.260	(6,60)
12SWS1155	SWS 1155	3/64	(1,19)	.562	(14,28)	.024	(0,61)	.370	(9,40)	.335	(8,51)
12SWS1156	SWS 1156	.050	(1,27)	.515	(13,08)	.039	(0,99)	.338	(8,59)	.260	(6,60)
12SWS1157	SWS 1157	.030	(0,76)	.375	(9,53)	.020	(0,51)	.312	(7,92)	.252	(6,40)
12SWS1158	SWS 1158	.100	(2,54)	.375	(9,53)	.031	(0,79)	.312	(7,92)	.260	(6,60)
12SWS1159	SWS 1159	9/16	(14,29)	.550	(13,97)	1/16	(1,59)	.375	(9,53)	.255	(6,48)
12SWS1160	SWS 1160	1/16	(1,59)	.562	(14,28)	7/64	(2,77)	.365	(9,27)	.215	(5,46)
12SWS1161	SWS 1161	.620	(15,75)	9/16	(14,27)	1/16	(1,57)	.395	(10,03)	.355	(9,02)
12SWS1162	SWS 1162	27/64	(10,72)	.560	(14,22)	1/16	(1,59)	.375	(9,53)	.255	(6,48)
12SWS1163	SWS 1163	15/32	(11,91)	.550	(13,97)	1/16	(1,59)	.380	(9,65)	.247	(6,27)
12SWS1164	SWS 1164	1/32	(0,79)	.562	(14,28)	1/8	(3,18)	.312	(7,93)	.169	(4,29)
12SWS1165	SWS 1165	1/4	(6,35)	.551	(13,99)	1/16	(1,59)	.380	(9,65)	.248	(6,30)
12SWS1166	SWS 1166	.038	(0,97)	.428	(10,87)	.062	(1,57)	.311	(7,90)	.169	(4,29)
12SWS1167	SWS 1167	.128	(3,25)	.591	(15,01)	.197	(5,00)	.394	(10,01)	.157	(3,99)
12SWS1168	SWS 1168	.438	(11,13)	.562	(14,27)	.062	(1,57)	.375	(9,53)	.188	(4,77)
12SWS1169	SWS 1169	.250	(6,35)	.562	(14,27)	.062	(1,57)	.312	(7,92)	.188	(4,77)
12SWS1170	SWS 1170	3/8	(9,53)	.570	(14,48)	1/16	(1,59)	.470	(11,94)	.385	(9,78)
12SWS1171	SWS 1171	.060	(1,52)	.625	(15,87)	.045	(1,14)	.470	(11,94)	.345	(8,76)
12SWS1172	SWS 1172	.394	(10,01)	.630	(16,00)	.079	(2,01)	.472	(11,99)	.394	(10,01)
12SWS1173	SWS 1173	.349	(8,86)	.839	(21,31)	.261	(6,63)	.475	(12,07)	.388	(9,86)

