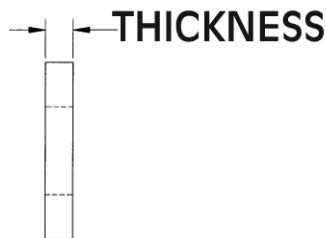
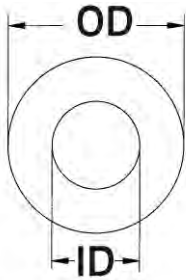


WASHERS, SHOULDER WASHERS & SCREW INSULATORS

SECTION IV

**New
SIZES**



SPECIAL FLAT WASHERS

Molded in **Natural Nylon 6/6**

ITEM NUMBER	DESCRIPTION	OD	ID	THICKNESS
17W02521	W 2521	.250 (6,35)	.147 (3,73)	.156 (3,96)
17W02522	W 2522	.250 (6,35)	.091 (2,31)	.165 (4,19)
17W02523	W 2523	.250 (6,35)	.163 (4,14)	.202 (5,13)
17W02524	W 2524	.250 (6,35)	.161 (4,08)	.170 (4,31)
17W02525	W 2525	.250 (6,35)	.171 (4,34)	.053 (1,34)
17W02526	W 2526	.250 (6,35)	.156 (3,96)	.150 (3,81)
17W02527	W 2527	.250 (6,35)	.171 (4,34)	.147 (3,73)
17W02528	W 2528	.250 (6,35)	.115 (2,92)	.065 (1,65)
17W02563	W 2563	.255 (6,47)	.198 (5,02)	.091 (2,31)
17W02564	W 2564	.256 (6,50)	.187 (4,75)	.045 (1,14)
17W02565	W 2565	.254 (6,45)	.161 (4,09)	.219 (5,56)
17W02590	W 2590	.250 (6,35)	.081 (2,06)	.025 (0,63)
17W02591	W 2591	.259 (6,58)	.081 (2,06)	.062 (1,57)
17W02595	W 2595	.295 (7,49)	.135 (3,43)	.127 (3,23)
17W02751	W 2751	.275 (6,99)	.120 (3,05)	.062 (1,57)
17W02752	W 2752	.270 (6,86)	.207 (5,26)	.05 (1,27)
17W02753	W 2753	.276 (7,01)	.138 (3,50)	.035 (0,88)
17W02754	W 2754	.283 (7,18)	.208 (5,28)	.072 (1,82)
17W02781	W 2781	.280 (7,11)	.210 (5,33)	.125 (3,18)
17W02801	W 2801	.280 (7,11)	.120 (3,05)	.145 (3,68)
17W02810	W 2810	.280 (7,11)	.150 (3,81)	.108 (2,74)
17W02811	W 2811	.288 (7,32)	.120 (3,05)	.040 (1,02)
17W02812	W 2812	.290 (7,38)	.115 (2,92)	.047 (1,19)
17W02813	W 2813	.280 (7,11)	.120 (3,05)	.030 (0,76)
17W02814	W 2814	.281 (7,14)	.120 (3,05)	.020 (0,51)
17W02815	W 2815	.281 (7,14)	.120 (3,05)	.040 (1,02)
17W02816	W 2816	.281 (7,14)	.120 (3,05)	.060 (1,52)
17W02817	W 2817	.280 (7,11)	.155 (3,94)	.160 (4,06)
17W02818	W 2818	.281 (7,14)	.140 (3,56)	.020 (0,51)
17W02819	W 2819	.281 (7,14)	.107 (2,71)	.020 (0,51)
17W02820	W 2820	.290 (7,36)	.196 (4,97)	.030 (0,76)
17W02851	W 2851	.285 (7,24)	.130 (3,30)	.060 (1,52)
17W02852	W 2852	.285 (7,24)	.160 (4,06)	.032 (0,81)
17W02853	W 2853	.280 (7,11)	.200 (5,08)	.093 (2,36)
17W02854	W 2854	.281 (7,14)	.175 (4,44)	.031 (0,79)
17W02862	W 2862	.282 (7,16)	.190 (4,83)	.065 (1,65)
17W02951	W 2951	.295 (7,49)	.220 (5,59)	.127 (3,23)
17W02952	W 2952	.310 (7,87)	.138 (3,50)	.030 (0,76)
17W02953	W 2953	.310 (7,87)	.190 (4,83)	.032 (0,81)
17W02954	W 2954	.310 (7,87)	.185 (4,70)	.032 (0,81)
17W02955	W 2955	.290 (7,37)	.195 (4,95)	.085 (2,16)
17W02956	W 2956	.296 (7,52)	.169 (4,29)	.074 (1,88)
17W02957	W 2957	.312 (7,92)	.192 (4,88)	.092 (2,34)
17W03070	W 3070	.307 (7,80)	.210 (5,33)	.125 (3,18)
17W03071	W 3071	.307 (7,80)	.144 (3,66)	.059 (1,50)
17W03101	W 3101	.310 (7,87)	.160 (4,06)	.060 (1,52)
17W03118	W 3118	.312 (7,92)	.189 (4,80)	.564 (14,32)
17W03121	W 3121	.312 (7,92)	.187 (4,75)	.050 (1,27)
17W03122	W 3122	.312 (7,92)	.095 (2,41)	.062 (1,57)
17W03123	W 3123	.318 (8,08)	.130 (3,30)	.062 (1,57)
17W03124	W 3124	.312 (7,92)	.110 (2,79)	.125 (3,18)
17W03125	W 3125	.312 (7,92)	.062 (1,57)	.125 (3,18)
17W03126	W 3126	.312 (7,92)	.115 (2,92)	.140 (3,56)
17W03127	W 3127	.312 (7,92)	.140 (3,56)	.047 (1,19)
17W03128	W 3128	.320 (8,13)	.156 (3,96)	.031 (0,79)
17W03129	W 3129	.312 (7,92)	.228 (5,79)	.250 (6,35)
17W03130	W 3130	.312 (7,92)	.162 (4,11)	.062 (1,57)

