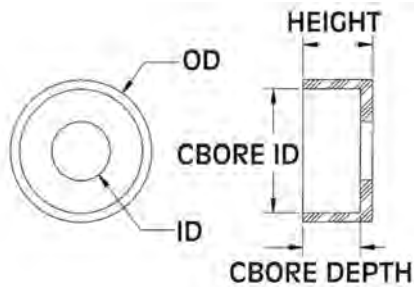


WASHERS, SHOULDER WASHERS & SCREW INSULATORS

SECTION IV

Nylon Cup Washers are designed to :

- Protect the head of a metal screw from electrical contact.
- Accommodate the most common screw head-styles including: Cheese, Pan and Fillister.



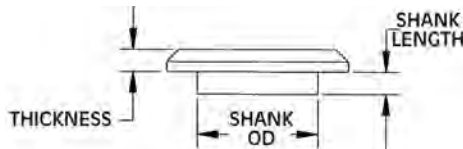
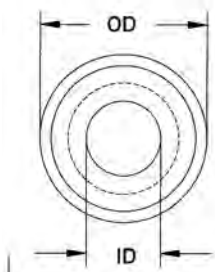
New SIZES



CUP WASHERS

Molded in **Natural Nylon 6/6**

ITEM NUMBER	OD	CBORE ID	ID	CBORE DEPTH	HEIGHT
16CW004257	.305 (7,74)	.245 (6,22)	.115 (2,92)	.217 (5,51)	.257 (6,52)
16CW004040	.305 (7,76)	.245 (6,22)	.115 (2,92)	.117 (2,97)	.157 (3,99)
16CW006040	.360 (9,14)	.300 (7,62)	.140 (3,56)	.142 (3,61)	.182 (4,62)
16CW008040	.414 (10,52)	.354 (8,99)	.171 (4,34)	.166 (4,22)	.206 (5,23)
16CW008042	.497 (12,62)	.389 (9,88)	.187 (4,75)	.093 (2,36)	.139 (3,53)
16CW008041	.414 (10,52)	.354 (8,99)	.171 (4,34)	.130 (3,30)	.170 (4,32)
16CW008043	.343 (8,71)	.281 (7,13)	.172 (4,36)	.182 (4,62)	.218 (5,53)
16CW010030	.568 (14,43)	.375 (9,53)	.201 (5,11)	.127 (3,23)	.157 (3,99)
16CW010040	.470 (11,94)	.410 (10,41)	.194 (4,93)	.190 (4,83)	.230 (5,85)
16CW250250	1.000 (25,4)	.500 (12,70)	.260 (6,60)	.150 (3,81)	.198 (5,03)
16CW250040	.595 (15,11)	.535 (13,59)	.257 (6,53)	.247 (6,27)	.287 (7,29)
16CW250042	.531 (13,48)	.465 (11,81)	.257 (6,58)	.650 (16,51)	.787 (19,98)
16CW312050	.500 (12,70)	.400 (10,16)	.320 (8,12)	.122 (3,09)	.170 (4,31)
16CW312375	.875 (22,23)	.625 (15,88)	.344 (8,74)	.250 (6,35)	.375 (9,53)
16CW312500	.875 (22,23)	.625 (15,88)	.344 (8,74)	.378 (9,60)	.500 (12,70)
16CW375225	1.000 (25,4)	.750 (19,05)	.380 (9,65)	.125 (3,18)	.225 (5,72)
16CW437520	1.094 (27,78)	.786 (19,96)	.437 (11,09)	.196 (4,97)	.531 (13,48)



STANDARD SHOULDER WASHERS

Molded in **Natural Nylon 6/6**

ITEM NUMBER	DESCRIPTION	SCREW SIZE	SHANK LENGTH	OD	THICKNESS	SHANK OD	ID
24SW0002	SW 2	2	.040 (1,02)	.250 (6,35)	.040 (1,02)	.156 (3,96)	.093 (2,36)
24SW0004	SW 4	4	.040 (1,02)	.281 (7,14)	.040 (1,02)	.187 (4,75)	.122 (3,09)
24SW0006	SW 6	6	.040 (1,02)	.328 (8,33)	.040 (1,02)	.218 (5,54)	.146 (3,71)
24SW0008	SW 8	8	.050 (1,27)	.375 (9,53)	.050 (1,27)	.250 (6,35)	.174 (4,42)
24SW0010	SW 10	10	.050 (1,27)	.437 (11,10)	.050 (1,27)	.281 (7,14)	.201 (5,11)
24SW0250	SW1/4	1/4	.060 (1,52)	.562 (14,27)	.060 (1,52)	.375 (9,53)	.260 (6,60)
24SW0375	SW3/8	3/8	.060 (1,52)	.750 (19,05)	.060 (1,52)	.500 (12,70)	.385 (9,78)