

WASHERS, SHOULDER WASHERS & SCREW INSULATORS

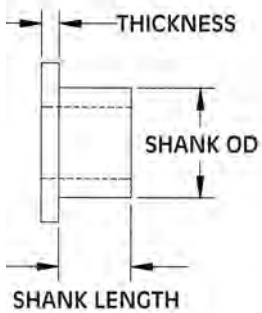
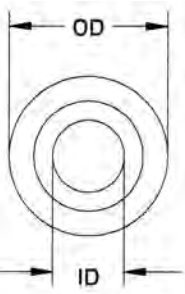
SECTION IV

SHOULDER WASHERS

Molded in **Natural Nylon 6/6**

Nylon Shoulder Washers are suitable for a large variety of insulation and mechanical applications.

► THEY INSULATE ► REDUCE VIBRATION ► ACT AS SPACERS AND GUIDES ► STRONG AND CORROSION RESISTANT ► CAN BE USED AS SEAL IN SOME APPLICATIONS



ITEM NUMBER	DESCRIPTION	SHANK LENGTH		OD	THICKNESS	SHANK OD	ID
12SWS2579	SWS 2579	.180	(4,57)	.750 (19,05)	.240 (6,10)	.500 (12,70)	.370 (9,40)
12SWS2580	SWS 2580	5/16	(7,94)	.745 (18,92)	1/32 (0,79)	.563 (14,30)	.500 (12,70)
12SWS2581	SWS 2581	1/4	(6,35)	.750 (19,05)	5/64 (1,98)	.505 (12,83)	.315 (8,00)
12SWS2582	SWS 2582	.250	(6,35)	.625 (15,88)	.062 (1,59)	1/2 (12,70)	.312 (7,94)
12SWS2583	SWS 2583	.085	(2,16)	.510 (12,95)	.060 (1,52)	.315 (8,00)	.175 (4,45)
12SWS2584	SWS 2584	.050	(1,27)	.735 (18,67)	.050 (1,27)	.710 (18,03)	.640 (16,26)
12SWS2585	SWS 2585	1/4	(6,35)	.740 (18,80)	1/2 (12,70)	.605 (15,37)	.380 (9,65)
12SWS2586	SWS 2586	1/4	(6,35)	.750 (19,05)	1/8 (3,18)	.500 (12,70)	.281 (7,14)
12SWS2587	SWS 2587	7/16	(11,11)	3/4 (19,05)	1/16 (1,59)	5/8 (15,88)	1/2 (12,70)
12SWS2588	SWS 2588	.196	(4,98)	.752 (19,10)	.058 (1,47)	.476 (12,09)	.378 (9,60)
12SWS2589	SWS 2589	.057	(1,45)	.877 (22,28)	.135 (3,43)	.565 (14,35)	.504 (12,80)
12SWS2590	SWS 2590	.018	(0,46)	.745 (18,92)	.085 (2,16)	.305 (7,75)	.200 (5,08)
12SWS2591	SWS 2591	.050	(1,27)	.875 (22,23)	.031 (0,79)	.580 (14,73)	.520 (13,21)
12SWS2592	SWS 2592	.118	(2,99)	1.008 (25,60)	.079 (2,00)	.583 (14,80)	.476 (12,09)
12SWS2593	SWS 2593	.080	(2,03)	.701 (17,80)	.058 (1,47)	.426 (10,82)	.152 (3,86)
12SWS2594	SWS 2594	.312	(7,92)	.750 (19,05)	.066 (1,67)	.375 (9,52)	.312 (7,92)
12SWS2595	SWS 2595	.216	(5,48)	.750 (19,05)	.125 (3,17)	.498 (12,64)	.381 (9,67)
12SWS2596	SWS 2596	.062	(1,57)	.675 (17,14)	.098 (2,48)	.479 (12,16)	.315 (8,00)
12SWS3001	SWS 3001	1/8	(3,18)	.693 (17,60)	1/16 (1,59)	.437 (11,10)	.328 (8,33)
12SWS3002	SWS 3002	3/64	(1,19)	.750 (19,05)	3/64 (1,19)	.375 (9,53)	.323 (8,20)
12SWS3003	SWS 3003	7/32	(5,55)	.750 (19,05)	3/32 (2,38)	.380 (9,65)	.266 (6,76)
12SWS3004	SWS 3004	1/16	(1,59)	.750 (19,05)	3/32 (2,38)	.359 (9,12)	.152 (3,86)
12SWS3005	SWS 3005	5/32	(3,97)	.750 (19,05)	1/32 (0,79)	.498 (12,64)	.378 (9,60)
12SWS3006	SWS 3006	1/32	(0,79)	.750 (19,05)	1/8 (3,18)	.500 (12,70)	.375 (9,53)
12SWS3007	SWS 3007	1/16	(1,59)	.750 (19,05)	1/8 (3,18)	.500 (12,70)	.375 (9,53)
12SWS3008	SWS 3008	1/16	(1,59)	.745 (18,92)	1/32 (0,79)	.370 (9,40)	.320 (8,13)
12SWS3009	SWS 3009	3/64	(1,19)	.760 (19,30)	5/64 (1,98)	.410 (10,41)	.258 (6,55)
12SWS3010	SWS 3010	.027	(0,68)	.750 (19,05)	.031 (0,79)	.310 (7,87)	.257 (6,53)
12SWS3011	SWS 3011	.196	(4,98)	.763 (19,38)	.026 (0,66)	.562 (14,27)	.394 (10,01)
12SWS3012	SWS 3012	.395	(10,03)	.740 (18,80)	.065 (1,65)	.430 (10,92)	.322 (8,18)
12SWS3013	SWS 3013	.106	(2,69)	.545 (13,84)	.148 (3,76)	.416 (10,57)	.255 (6,48)
12SWS3014	SWS 3014	.060	(1,52)	.680 (17,27)	.060 (1,52)	.495 (12,57)	.390 (9,91)
12SWS3015	SWS 3015	1.005	(25,53)	.752 (19,10)	.060 (1,52)	.505 (12,83)	.320 (8,13)
12SWS3016	SWS 3016	.050	(1,27)	.745 (18,82)	1/16 (1,59)	.556 (14,12)	.515 (13,08)
12SWS3017	SWS 3017	5/32	(3,97)	.755 (19,18)	1/2 (12,70)	.510 (12,95)	.385 (9,78)
12SWS3018	SWS 3018	.060	(1,52)	1.060 (26,96)	.060 (1,52)	.515 (13,08)	.395 (10,03)
12SWS3019	SWS 3019	.155	(3,93)	.750 (19,05)	.075 (1,90)	.527 (13,38)	.408 (10,36)
12SWS3020	SWS 3020	.305	(7,75)	.740 (18,80)	.130 (3,30)	.495 (12,57)	.219 (5,56)
12SWS3021	SWS 3021	.440	(11,18)	.745 (18,92)	1/16 (1,59)	.495 (12,57)	.390 (9,91)
12SWS3022	SWS 3022	.188	(4,78)	.750 (19,05)	.092 (2,34)	.627 (15,93)	.506 (12,85)
12SWS3023	SWS 3023	.216	(5,49)	.765 (19,43)	.126 (3,20)	.481 (12,22)	.250 (6,35)
12SWS3024	SWS 3024	.240	(6,10)	.750 (19,05)	.070 (1,78)	.490 (12,45)	.375 (9,52)
12SWS3025	SWS 3025	5/16	(7,92)	3/4 (19,05)	.062 (1,59)	.625 (15,88)	.505 (12,83)
12SWS3026	SWS 3026	.125	(3,18)	1.000 (25,4)	.125 (3,18)	.625 (15,88)	.515 (13,08)
12SWS3027	SWS 3027	.709	(18,01)	1.102 (27,99)	.118 (3,00)	.709 (18,01)	.551 (14,00)
12SWS3028	SWS 3028	.250	(6,35)	1.188 (30,17)	.031 (0,79)	.625 (15,88)	.563 (14,30)
12SWS3029	SWS 3029	.058	(1,47)	.788 (20,02)	.058 (1,47)	.710 (18,03)	.639 (16,23)
12SWS3030	SWS 3030	.252	(6,40)	.780 (19,81)	.079 (2,01)	.392 (9,96)	.250 (6,35)
12SWS3031	SWS 3031	.110	(2,79)	.810 (20,57)	.130 (3,30)	.498 (12,65)	.388 (9,86)

