

UNIVERSAL NUTS

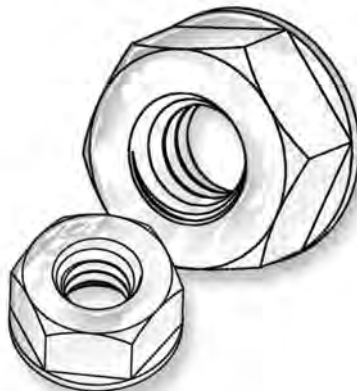
STOCKED IN NYLON 6/6 UL 94V2 - CAN BE FURNISHED IN ACETAL

SECTION



METRIC Sizes
Also Available

Page 273



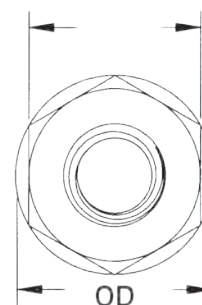
LOCK NUTS

Molded in **Natural Nylon 6/6**

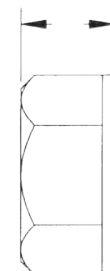
DESIGNED FOR STEEL SCREWS

ITEM NUMBER	SCREW SIZE	THREAD	ACROSS FLATS	HEIGHT	OD
0700256LN	2	256	.180 (4,57)	.140 (3,56)	.205 (5,21)
0700440LN	4	440	.250 (6,35)	.180 (4,57)	.285 (7,24)
0700632LN	6	632	.305 (7,75)	.200 (5,08)	.350 (8,89)
0700832LN	8	832	.335 (8,51)	.230 (5,84)	.385 (9,78)
0701024LN	10	1024	.365 (9,27)	.250 (6,35)	.425 (10,80)
0701032LN	10	1032	.365 (9,27)	.250 (6,35)	.425 (10,80)
0725020LN	1/4	1/4-20	.425 (10,80)	.275 (6,99)	.510 (12,95)
0725028LN	1/4	1/4-28	.425 (10,80)	.275 (6,99)	.510 (12,95)

ACROSS FLATS



HEIGHT



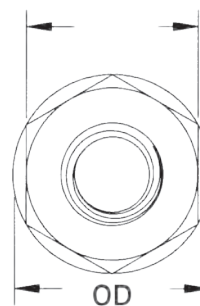
SELF - THREADING LOCK NUTS

Molded in **Natural Nylon 6/6**

DESIGNED FOR STEEL SCREWS

ITEM NUMBER	SCREW SIZE	ACROSS FLATS	HEIGHT	OD
0700256SLN	256	.180 (4,57)	.140 (3,56)	.205 (5,21)
0700440SLN	440	.250 (6,35)	.200 (5,08)	.285 (7,24)
0700632SLN	632	.305 (7,75)	.200 (5,08)	.350 (8,89)
0700832SLN	832	.335 (8,51)	.230 (5,84)	.385 (9,78)
0701024SLN	1024	.365 (9,27)	.250 (6,35)	.425 (10,80)
0701032SLN	1032	.365 (9,27)	.250 (6,35)	.425 (10,80)
0725020SLN	1/4-20	.425 (10,80)	.275 (6,99)	.510 (12,95)

ACROSS FLATS



HEIGHT

