

WIRE HANDLING HARDWARE

SECTION VII

CLIP MOUNTS

Molded in **Natural Nylon 6/6**

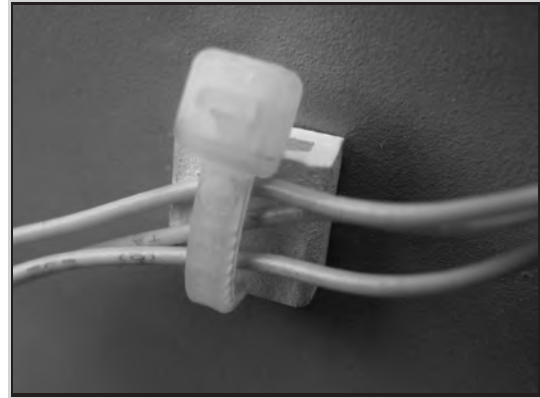
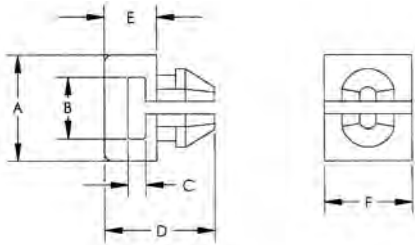
Clip Mounts are designed to securely connect a tie to a predrilled hole. Clip Mounts can be used in applications where the back of the panel is inaccessible.



23TA00090

23TA00100

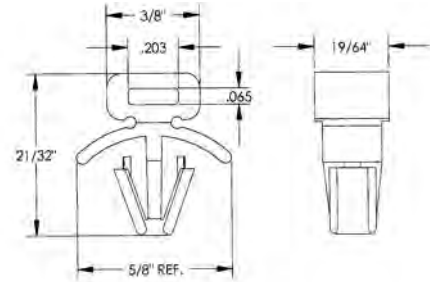
23TA00110



ITEM NUMBER	A	B	C	D	E	F	HOLE SIZE	PANEL THICKNESS
23TA00090	.320 (8,13)	.220 (5,59)	.050 (1,27)	.350 (8,89)	.150 (3,81)	.320 (8,13)	.187 (4,75)	.062 (1,57)
23TA00100	.380 (9,65)	.220 (5,59)	.065 (1,65)	.400 (10,16)	.190 (4,83)	.320 (8,13)	.187 (4,75)	.062 (1,57)
23TA00110	.380 (9,65)	.220 (5,59)	.065 (1,65)	.400 (10,16)	.190 (4,83)	.320 (8,13)	.250 (6,35)	.062 (1,57)

CLIP MOUNTS

Molded in **Natural Nylon 6/6**

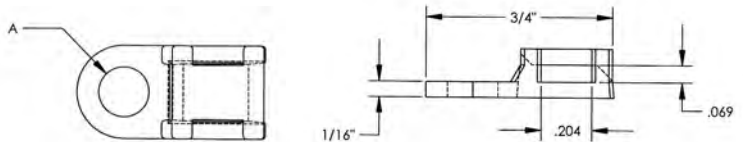
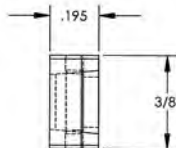
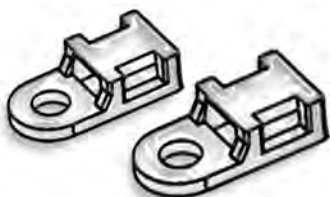


ITEM NUMBER	DESCRIPTION	HOLE SIZE	PANEL THICKNESS
23TA00120	.250 (6,35) CLIP MOUNT	.250 (6,35)	.047-.108 (1,19/2,74)

CLIP MOUNTS

Molded in **Natural Nylon 6/6**

Screw clip mount tie holder offers a two way entry and is secured with a #8 or #10 mounting screw.



ITEM NUMBER	A	SCREW SIZE
23TA40170	.171 (4,34)	#8
23TA40200	.201 (5,11)	#10