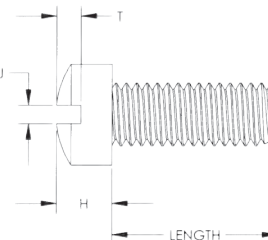
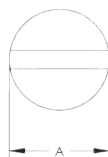
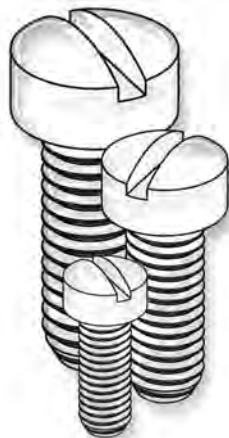


SCREWS, BOLTS, & THREADED ROD

SECTION
II

**METRIC Sizes
Also Available**
Page 267



SCREW SIZE	A	H	J	T
0	.119-.126	.026-.032	.016-.023	.009-.018
2	.124-.140	.066-.083	.023-.031	.025-.037
3	.145-.161	.077-.095	.027-.035	.030-.043
4	.166-.183	.088-.107	.031-.039	.035-.048
5	.187-.205	.100-.120	.035-.043	.040-.054
6	.208-.226	.111-.132	.039-.048	.045-.060
8	.250-.270	.133-.156	.045-.054	.054-.071
10	.292-.313	.156-.180	.050-.060	.064-.083
12	.334-.357	.134-.148	.056-.067	.074-.094
1/4	.389-.414	.207-.237	.064-.075	.087-.109
3/8	.590-.622	.315-.355	.081-.094	.133-.164

FILLISTER SLOTTED HEADSTYLE

Molded in Natural Nylon 6/6

PART NUMBER	SCREW SIZE	THREAD	LENGTH	PART NUMBER	SCREW SIZE	THREAD	LENGTH	PART NUMBER	SCREW SIZE	THREAD	LENGTH	PART NUMBER	SCREW SIZE	THREAD	LENGTH
010080F012	0	0-80	1/8	010440F037	4	440	3/8	010632F200	6	632	2	011032F025	10	1032	1/4
010080F018	0	0-80	3/16	010440F043	4	440	7/16	010632F225	6	632	2 1/4	011032F031	10	1032	5/16
010080F025	0	0-80	1/4	010440F050	4	440	1/2	010640F025	6	640	1/4	011032F037	10	1032	3/8
010256F009	2	256	3/32	010440F056	4	440	9/16	010640F037	6	640	3/8	011032F043	10	1032	7/16
010256F012	2	256	1/8	010440F062	4	440	5/8	010640F075	6	640	3/4	011032F050	10	1032	1/2
010256F015	2	256	5/32	010440F068	4	440	11/16	010640F100	6	640	1	011032F062	10	1032	5/8
010256F018	2	256	3/16	010440F075	4	440	3/4	010832F012	8	832	1/8	011032F075	10	1032	3/4
010256F025	2	256	1/4	010440F087	4	440	7/8	010832F018	8	832	3/16	011032F081	10	1032	13/16
010256F028	2	256	9/32	010440F100	4	440	1	010832F025	8	832	1/4	011032F087	10	1032	7/8
010256F031	2	256	5/16	010440F112	4	440	1 1/8	010832F028	8	832	9/32	011032F100	10	1032	1
010256F037	2	256	3/8	010440F118	4	440	1 3/16	010832F031	8	832	5/16	011032F106	10	1032	1 1/16
010256F039	2	256	25/64	010440F125	4	440	1 1/4	010832F037	8	832	3/8	011032F125	10	1032	1 1/4
010256F043	2	256	7/16	010440F137	4	440	1 3/8	010832F043	8	832	7/16	011032F150	10	1032	1 1/2
010256F050	2	256	1/2	010440F150	4	440	1 1/2	010832F050	8	832	1/2	011032F175	10	1032	1 3/4
010256F056	2	256	9/16	010440F162	4	440	1 5/8	010832F062	8	832	5/8	011032F200	10	1032	2
010256F062	2	256	5/8	010440F175	4	440	1 3/4	010832F075	8	832	3/4	012520F025	1/4	1/4-20	1/4
010256F075	2	256	3/4	010448F025	4	448	1/4	010832F087	8	832	7/8	012520F031	1/4	1/4-20	5/16
010256F087	2	256	7/8	010540F037	5	540	3/8	010832F100	8	832	1	012520F037	1/4	1/4-20	3/8
010256F100	2	256	1	010632F009	6	632	3/32	010832F112	8	832	1 1/8	012520F050	1/4	1/4-20	1/2
010256F112	2	256	1 1/8	010632F012	6	632	1/8	010832F125	8	832	1 1/4	012520F062	1/4	1/4-20	5/8
010264F018	2	264	3/16	010632F015	6	632	5/32	010832F137	8	832	1 3/8	012520F075	1/4	1/4-20	3/4
010264F037	2	264	3/8	010632F018	6	632	3/16	010832F150	8	832	1 1/2	012520F087	1/4	1/4-20	7/8
010348F012	3	348	1/8	010632F025	6	632	1/4	010832F175	8	832	1 3/4	012520F100	1/4	1/4-20	1
010348F018	3	348	3/16	010632F031	6	632	5/16	010832F187	8	832	1 7/8	012520F125	1/4	1/4-20	1 1/4
010348F025	3	348	1/4	010632F037	6	632	3/8	010832F200	8	832	2	012520F150	1/4	1/4-20	1 1/2
010348F031	3	348	5/16	010632F043	6	632	7/16	011024F012	10	1024	1/8	012520F175	1/4	1/4-20	1 3/4
010348F037	3	348	3/8	010632F050	6	632	1/2	011024F018	10	1024	3/16	012520F200	1/4	1/4-20	2
010348F043	3	348	7/16	010632F056	6	632	9/16	011024F025	10	1024	1/4	012520F250	1/4	1/4-20	2 1/2
010348F050	3	348	1/2	010632F062	6	632	5/8	011024F031	10	1024	5/16	012528F018	1/4	1/4-28	3/16
010348F075	3	348	3/4	010632F068	6	632	11/16	011024F037	10	1024	3/8	012528F025	1/4	1/4-28	1/4
010356F031	3	356	5/16	010632F075	6	632	3/4	011024F050	10	1024	1/2	012528F037	1/4	1/4-28	3/8
010436F050	4	436	1/2	010632F087	6	632	7/8	011024F062	10	1024	5/8	012528F062	1/4	1/4-28	5/8
010440F009	4	440	3/32	010632F100	6	632	1	011024F075	10	1024	3/4	012528F075	1/4	1/4-28	3/4
010440F012	4	440	1/8	010632F112	6	632	1 1/8	011024F100	10	1024	1	012528F100	1/4	1/4-28	1
010440F014	4	440	9/64	010632F125	6	632	1 1/4	011024F125	10	1024	1 1/4	0137524F100	3/8	3/8-24	1
010440F018	4	440	3/16	010632F150	6	632	1 1/2	011024F150	10	1024	1 1/2				
010440F025	4	440	1/4	010632F162	6	632	1 5/8	011024F200	10	1024	2				
010440F028	4	440	9/32	010632F175	6	632	1 3/4	011032F012	10	1032	1/8				
010440F031	4	440	5/16	010632F187	6	632	1 7/8	011032F018	10	1032	3/16				

