

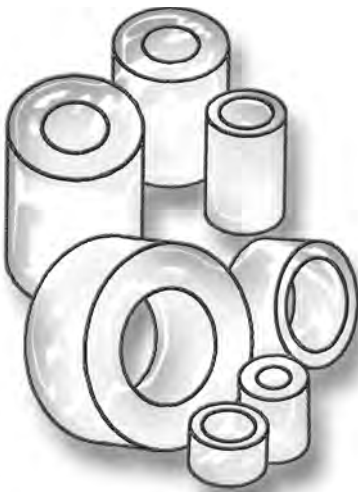
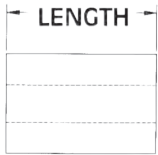
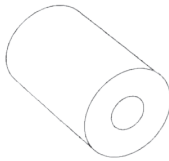
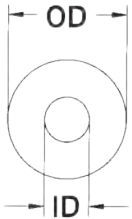
SPACERS

SECTION

V

SPECIAL SPACERS

Molded in **Natural Nylon 6/6**



ITEM NUMBER	DESCRIPTION	OD	ID	LENGTH
13RS025019	RS 25019	.250 (6,35)	.171 (4,34)	.475 (12,07)
13RS025020	RS 25020	.250 (6,35)	.205 (5,21)	.230 (5,84)
13RS025021	RS 25021	.250 (6,35)	.125 (3,18)	.375 (9,53)
13RS025022	RS 25022	.252 (6,40)	.132 (3,35)	.532 (13,51)
13RS025023	RS 25023	.250 (6,35)	.134 (3,40)	.296 (7,51)
13RS025024	RS 25024	.250 (6,35)	.131 (3,32)	.347 (8,81)
13RS025025	RS 25025	.250 (6,35)	.205 (5,20)	.245 (6,22)
13RS025041	RS 25041	.250 (6,35)	.120 (3,05)	.389 (9,88)
13RS025042	RS 25042	.250 (6,35)	.125 (3,18)	.420 (10,67)
13RS025043	RS 25043	.250 (6,35)	.142 (3,61)	.410 (10,41)
13RS025044	RS 25044	.250 (6,35)	.098 (2,48)	.250 (6,35)
13RS025048	RS 25048	.250 (6,35)	.115 (2,92)	7/32 (5,55)
13RS025050	RS 25050	.250 (6,35)	.147 (3,73)	19/64 (7,52)
13RS025051	RS 25051	.250 (6,35)	.171 (4,34)	.334 (8,48)
13RS025052	RS 25052	.250 (6,35)	.147 (3,73)	.500 (12,70)
13RS025053	RS 25053	.250 (6,35)	.140 (3,56)	17/32 (13,49)
13RS025054	RS 25054	.250 (6,35)	.173 (4,39)	.281 (7,13)
13RS025055	RS 25055	.250 (6,35)	.140 (3,56)	35/64 (13,87)
13RS025056	RS 25056	.250 (6,35)	.140 (3,56)	.640 (16,26)
13RS025057	RS 25057	.250 (6,35)	.171 (4,34)	.375 (9,53)
13RS025058	RS 25058	.250 (6,35)	.140 (3,56)	.220 (5,59)
13RS025059	RS 25059	.250 (6,35)	.140 (3,55)	.210 (5,33)
13RS025062	RS 25062	.260 (6,60)	.200 (5,08)	19/32 (15,08)
13RS025063	RS 25063	.265 (6,73)	.200 (5,08)	.296 (7,51)
13RS025065	RS 25065	.250 (6,35)	.160 (4,06)	.750 (19,05)
13RS025066	RS 25066	.260 (6,60)	.200 (5,08)	.556 (14,12)
13RS025070	RS 25070	.250 (6,35)	.141 (3,58)	9/32 (7,14)
13RS025075	RS 25075	.250 (6,35)	.115 (2,92)	.207 (5,26)
13RS025090	RS 25090	.250 (6,35)	.115 (2,92)	1-5/16 (33,32)
13RS025091	RS 25091	.251 (6,38)	.152 (3,86)	5/32 (3,97)
13RS025092	RS 25092	.250 (6,35)	.150 (3,81)	.345 (8,76)
13RS025095	RS 25095	.251 (6,38)	.115 (2,92)	17/32 (13,49)
13RS027540	RS 27540	.275 (6,99)	.195 (4,95)	.40 (10,16)
13RS027541	RS 27541	.275 (6,99)	.185 (4,70)	.090 (2,29)
13RS028030	RS 28030	.280 (7,11)	.170 (4,32)	.300 (7,62)
13RS028035	RS 28035	.281 (7,13)	.208 (5,28)	.187 (4,74)
13RS028038	RS 28038	.280 (7,11)	.125 (3,18)	19/64 (7,54)
13RS028039	RS 28039	.280 (7,11)	.130 (3,30)	.296 (7,51)
13RS028440	RS 28440	.284 (7,21)	.224 (5,69)	.400 (10,16)
13RS029618	RS 29618	.296 (7,52)	.125 (3,18)	3/32 (2,38)
13RS030500	RS 30500	.305 (7,75)	.260 (6,60)	.179 (4,55)
13RS030501	RS 30501	.303 (7,69)	.250 (6,35)	.312 (7,92)
13RS030502	RS 30502	.302 (7,67)	.152 (3,86)	.206 (5,23)
13RS030503	RS 30503	.300 (7,62)	.175 (4,44)	.197 (5,00)
13RS031210	RS 31210	.312 (7,93)	.095 (2,41)	1/4 (6,35)
13RS031211	RS 31211	.312 (7,93)	.194 (4,93)	1.405 (35,68)
13RS031212	RS 31212	.312 (7,93)	.194 (4,93)	.530 (13,46)
13RS031213	RS 31213	.312 (7,93)	.205 (5,21)	.160 (4,06)
13RS031214	RS 31214	.312 (7,93)	.140 (3,56)	9/32 (7,14)
13RS031215	RS 31215	.309 (7,85)	.200 (5,08)	.346 (8,79)
13RS031216	RS 31216	.312 (7,92)	.194 (4,92)	.228 (5,79)
13RS031221	RS 31221	.312 (7,93)	.195 (4,95)	.214 (5,44)
13RS031222	RS 31222	.309 (7,85)	.225 (5,72)	.280 (7,11)
13RS031223	RS 31223	.315 (8,00)	.118 (2,99)	.236 (5,99)
13RS031225	RS 31225	.312 (7,93)	.156 (3,96)	.256 (6,50)
13RS031226	RS 31226	5/16 (7,94)	.228 (5,79)	.260 (6,60)
13RS031230	RS 31230	.312 (7,93)	.246 (6,25)	1/4 (6,35)
13RS031231	RS 31231	.312 (7,92)	.194 (4,92)	.590 (14,45)
13RS031242	RS 31242	.315 (8,00)	.182 (4,62)	.430 (10,92)