

# CIRCUIT BOARD HARDWARE

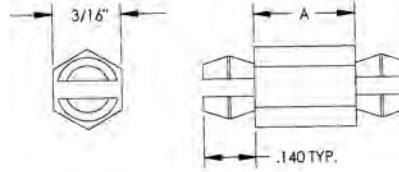
SECTION  
VIII

## LOCKING HEX SPACERS

Molded in **Natural Nylon 6/6**

Economical Locking Spacers eliminate screws, nuts and lock washers in mounting P.C. boards on metal chassis or stacking in multiple tiers. Unique locking clips provide a mechanically secure, reusable connection in predrilled or punched holes while saving considerable assembly time.

FITS HOLE SIZE OF .152  
BOARD THICKNESS 1/16

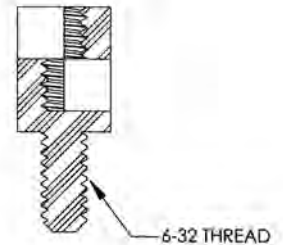
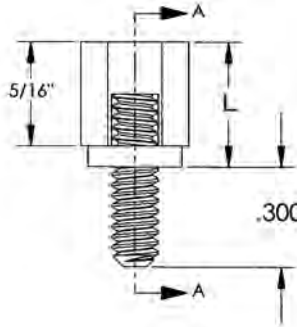
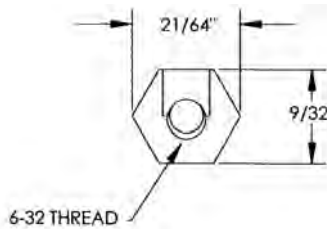
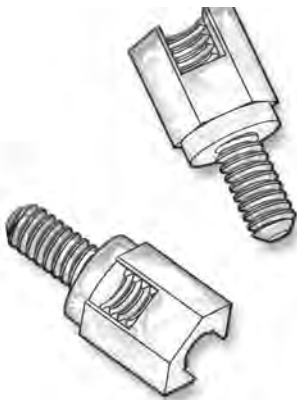


ITEM NUMBER	DESCRIPTION	A
27MPH00276	MPH 276	.276 (7,01)

## MALE-FEMALE CIRCUIT BOARD SUPPORT

Molded in **Natural Nylon 6/6**

Nylon 6/6 rated UL94V2  
male/female thread with  
3/8" board spacing.

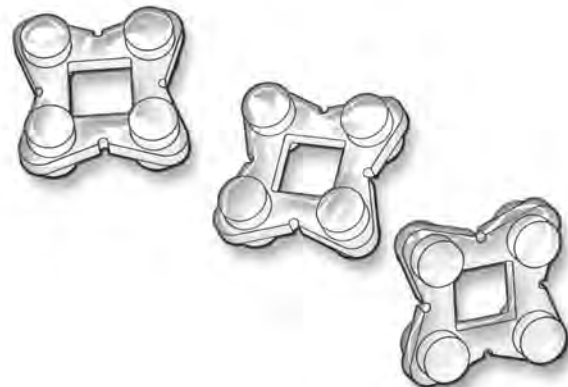
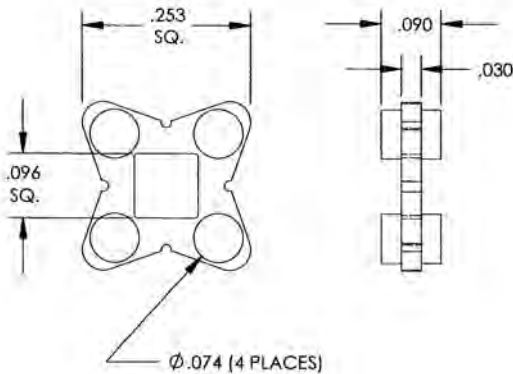


ITEM NUMBER	L	DESCRIPTION
27TMF0375	3/8"	Male-Female Circuit Board Support
27TMF0625	5/8"	Male-Female Circuit Board Support

## SQUARE STANDOFF LED MOUNT

Molded in **Natural Nylon 6/6**

LED Mount provides secure mounting of both two and three lead devices. Nylon mount provides protection from heat, shock and vibration. Symmetrical design with feet on both sides eliminating need for specific side rotation.



ITEM NUMBER	DESCRIPTION
18TRM001	TRM 001