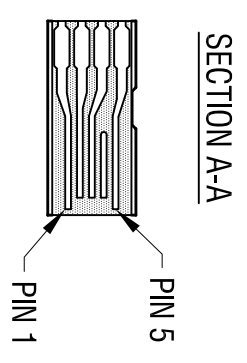
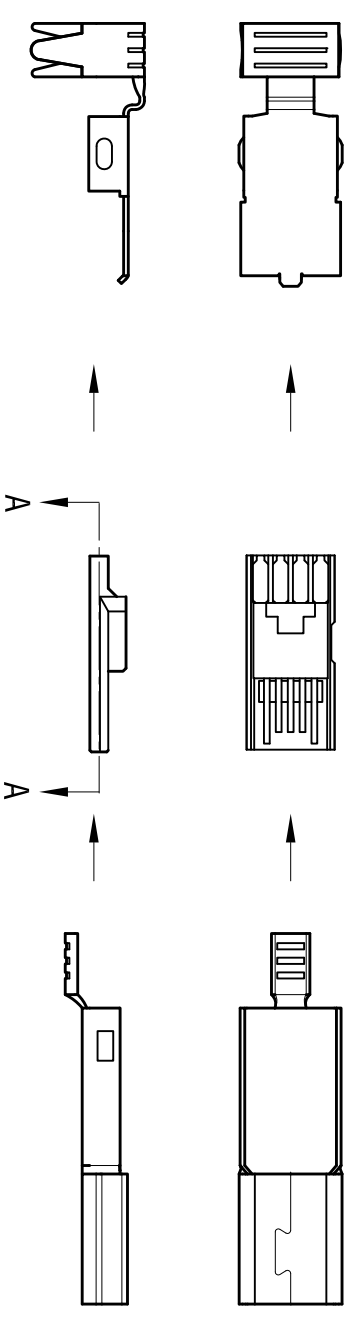
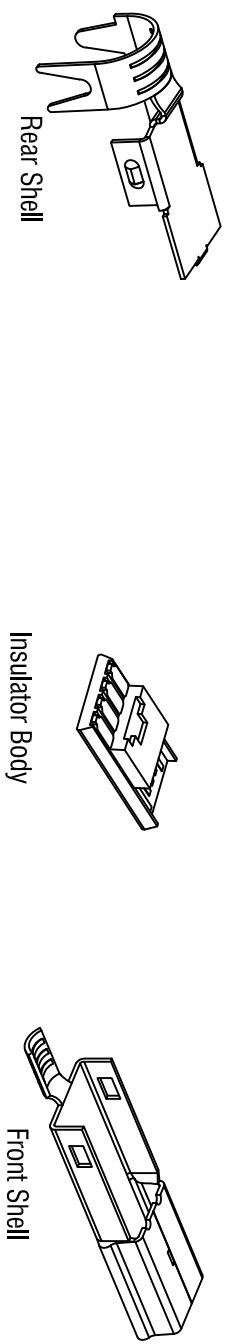


DATE	DESCRIPTION	REV.
5.31.11	CHANGE AS PER ECN 11-072	A
7.28.20	CHANGE AS PER ECN 20-069 UPDATE REAR SHELL	B



NOTE:
SHELL: MAT'L- STEEL
FINISH: TIN OVER NICKEL PLATING

INSULATION: THERMOPLASTIC, UL 94V-0
CONTACT: MAT'L- PHOSPHOR BRONZE
FINISH: GOLD PLATE ON CONTACT AREA
TIN OVER NICKEL ON SOLDER TAILS

ELECTRICAL CHARACTERISTICS:
CONTACT RESISTANCE: 30m Ω max.
INSULATION RESISTANCE: 1000 MEGA Ω min.
DIELECTRIC WITHSTANDING VOLTAGE : 500 V AC

THIS DOCUMENT IS THE PROPERTY OF KEYSTONE ELECTRONICS CORP. AND SHALL NOT BE REPRODUCED, DISTRIBUTED OR USED AS A BASIS FOR MANUFACTURE WITHOUT PRIOR WRITTEN PERMISSION FROM KEYSTONE ELECTRONICS CORP.

KEYSTONE ELECTRONICS CORP.			
www.keystec.com • NEW HYDE PARK, NY 11040 • Tel (516) 328-7500			
PART NAME			
USB MINI PLUG			
MATERIAL			
AS NOTED			
FINISH			
AS NOTED			
TOLERANCES	INCH	[MM]	CODE
DECIMAL	$\pm .015$	[± 0.38]	C
ANGULAR	$\pm 1^\circ$		
UNLESS OTHERWISE SPECIFIED			
DRN BY	BOONE	DATE	7.28.20
APP'D	RH	SCALE	2X
DWG NO.		935	