

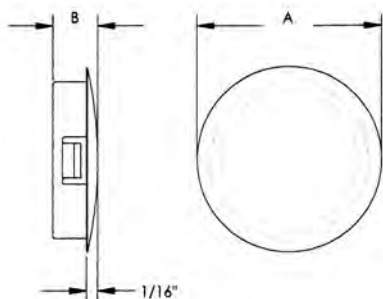
PANEL FASTENERS AND HOLE PLUGS

SECTION
VI

MINIATURE LOCKING HOLE PLUGS

Molded in **Black Heat Stabilized Nylon (UL94V2)**

Nylon Miniature Locking Hole Plugs are available in sizes from 3/16" to 7/8". Designed with multiple locks to positively snap in panel thickness of 1/16". Locking Hole Plugs are used to close excess chassis holes, wiring outlets, and production access holes.



- ALL ITEMS ARE PACKAGED 1,000 PIECES PER BAG
- WHITE PARTS ADD "W" TO THE END OF PART NUMBER

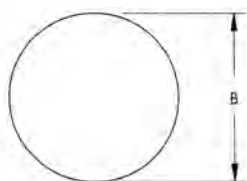


ITEM NUMBER	DESCRIPTION	HOLE DIAMETER	A	B
62MPS0187	3/16" Miniature Locking Hole Plug	0.187 (4,75)	0.250 (6,35)	0.234 (5,94)
62MPS0312	5/16" Miniature Locking Hole Plug	0.312 (7,93)	0.375 (9,53)	0.234 (5,94)
62MPS0343	11/32" Miniature Locking Hole Plug	0.343 (8,71)	0.410 (10,41)	0.250 (6,35)
62MPS0375	3/8" Miniature Locking Hole Plug	0.375 (9,53)	0.468 (11,89)	0.250 (6,35)
62MPS0500	1/2" Miniature Locking Hole Plug	0.500 (12,7)	0.578 (14,7)	0.250 (6,35)
62MPS0625	5/8" Miniature Locking Hole Plug	0.625 (15,9)	0.718 (18,2)	0.250 (6,35)
62MPS0750	3/4" Miniature Locking Hole Plug	0.750 (19,1)	0.922 (23,4)	0.250 (6,35)
62MPS0875	7/8" Miniature Locking Hole Plug	0.875 (22,2)	1.016 (25,8)	0.250 (6,35)

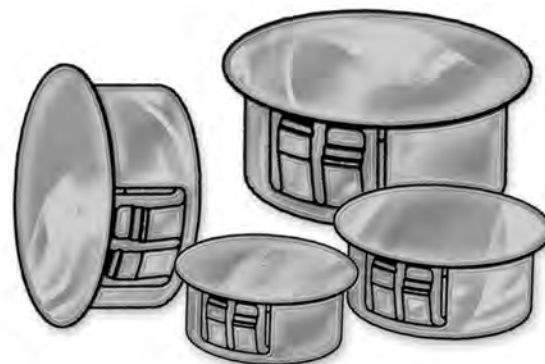
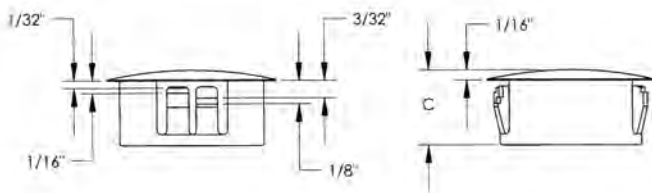
KNOCK OUT PLUGS

Molded in **GREY HEAT STABILIZED Nylon**

Knock out plugs are molded in Grey Nylon to blend in with galvanized steel. Economical plugs that lock firmly into 5 trade size holes with panel thickness up to 1/8". Installs with fingertip pressure - no tools required.



- * MINIMUM ORDER QUANTITY 1,000 PIECES
- ** MINIMUM ORDER QUANTITY 500 PIECES
- *** MINIMUM ORDER QUANTITY 250 PIECES



ITEM NUMBER	DESCRIPTION	MAXIMUM HOLE DIA.	MAX PANEL THICKNESS	DIAMETER B	THICKNESS C
* 62MP0875KOP	7/8" Knock Out Plug	0.875 (22,2)	0.125 (3,18)	1.016 (25,8)	.453 (11,5)
** 62MP1093KOP	1 1/8" Knock Out Plug	1.093 (27,8)	0.125 (3,18)	1.222 (31,0)	.453 (11,5)
** 62MP1375KOP	1 3/8" Knock Out Plug	1.375 (34,9)	0.125 (3,18)	1.500 (38,1)	.453 (11,5)
*** 62MP1500KOP	1 1/2" Knock Out Plug	1.500 (38,1)	0.125 (3,18)	1.692 (42,4)	.453 (11,5)
*** 62MP1750KOP	1 3/4" Knock Out Plug	1.750 (44,5)	0.125 (3,18)	1.935 (49,1)	.453 (11,5)
*** 62MP2000KOP	2" Knock Out Plug	2.000 (50,8)	0.125 (3,18)	2.140 (54,4)	.453 (11,5)