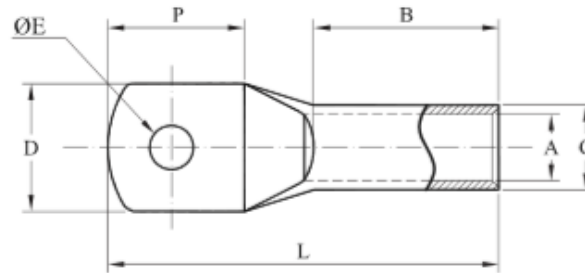


Compression Lugs - Heavy Duty - Long Barrel - Copper



Part No	Cable Size (mm ²)	Screw Size Ø (mm)	Dimensions (mm)					
			A	C	D	P	B	L
51001	1.5	4.2	1.8	3.7	8	9	7	18
51002	1.5	5.2	1.8	3.7	9	10	7	19
51003	1.5	6.2	1.8	3.7	9	11	7	20
51004	2.5	3.2	2.4	4	8	9	7	18
51005	2.5	4.2	2.4	4	8	9	7	18
51006	2.5	5.2	2.4	4	8	10	7	18
51007	2.5	6.2	2.4	4	10	12	7	20
51009	4	4.2	3.1	4.8	11	12	9	22
51010	4	5.2	3.1	4.8	11	12	9	22
51011	4	6.2	3.1	4.8	11	12	9	22
51012	4	8.2	3.1	4.8	11	16	11	29
51013	6	4.2	3.8	5.5	10	11	12	26
51014	6	5.2	3.8	5.5	10	11	12	26
51045	6	6.2	3.8	5.5	10	11	12	26
51016	6	8.2	3.8	5.5	12	16	12	31
51018	10	5.2	4.5	6.9	12	14	11	28
51019	10	6.2	4.5	6.9	12	14	11	28
51020	10	8.2	4.5	6.9	12	16	11	30
51021	10	10.5	4.5	6.9	17	20	11	35
51022	10	13	4.5	6.9	17	24	11	38



Part No	Cable Size (mm ²)	Screw Size Ø (mm)	Dimensions (mm)					
			A	C	D	P	B	L
51023	16	5.2	5.9	8	12	15	20	39
51024	16	6.2	5.9	8	12	15	20	39
51025	16	8.2	5.9	8	12	15	20	39
51026	16	10.5	5.9	8	17	26	20	50
51027	16	13	5.9	8	17	26	20	50
51028	25	6.2	7	9.7	14	16	23	42
51029	25	8.2	7	9.7	14	16	23	42
51030	25	10.5	7	9.7	19	23	23	50
51031	25	13	7	9.7	19	23	23	50
51032	35	6.2	8.4	11.5	16	19	23	46
51033	35	8.2	8.4	11.5	16	19	23	46
51034	35	10.5	8.4	11.5	16	19	23	46
51035	35	13	8.4	11.5	19	27	23	53
51036	35	17	8.4	11.5	24	35	23	63
51037	50	6.2	9.5	12.7	18	20	23	49
51038	50	8.2	9.5	12.7	18	20	23	49
51039	50	10.5	9.5	12.7	18	20	23	49
51040	50	13	9.5	12.7	18	20	23	49
51041	50	17	9.5	12.7	22	26	23	55
51042	70	6.2	11.1	14.3	20	23	24	54
51043	70	8.2	11.1	14.3	20	23	24	54
51044	70	10.5	11.1	14.3	20	23	24	54
51045	70	13	11.1	14.3	20	23	24	54
51045E*	70	13	11.1	14.3	20	23	24	54
51046	70	14	11.1	14.3	25	33	24	64

*E = No inspection hole.



Part No	Cable Size (mm ²)	Screw Size Ø (mm)	Dimensions (mm)					
			A	C	D	P	B	L
51047	70	17	11.1	14.3	25	33	24	64
51047E*	70	17	11.1	14.3	25	33	24	64
51048	70	21	11.1	14.3	28	44	24	77
51052	95	13	13.5	17.5	25	27	25	60
51057E*	120	13	15.5	20.6	29	29	32	70
51059	120	17	15.5	20.6	29	32	32	75
51059E*	120	17	15.5	20.6	29	32	32	75
51064	150	17	16.3	22.2	31	34	32	78

*E = No inspection hole.