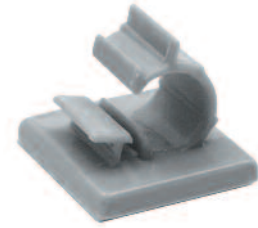


“Stay Connected” with



HEYware Products

a PennEngineering® Company

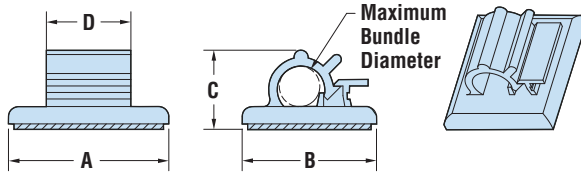


HEYClip™ Locking Releasable Wire Clips - Adhesive-Back Mount

MAXIMUM BUNDLE DIAMETER	PART NO.							DESCRIPTION	FOOTPRINT		OVERALL HEIGHT C		CLAMP WIDTH D	
	Rubber		Acrylic		VHB		A x B		in.	mm.	in.	mm.		
	Black	Gray	Black	Gray	Black	Gray	in.						mm.	
.19	4,8	3917	3857	3917A	3857A	3917V*	3857V*	WCA 187-500	.74 x .62	18,8 x 15,7	.34	8,6	.39	9,9
.25	6,4	3918	3858	3918A	3858A	3918V*	3858V*	WCA 250-750	1.00 x .87	25,4 x 22,1	.42	10,7	.63	16,0
.38	9,6	3919	3859	3919A	3859A	3919V*	3859V*	WCA 375-1000	1.00 x 1.00	25,4 x 25,4	.50	12,7		
.50	12,7	3920	3860	3920A	3860A	3920V*	3860V*	WCA 500-1250	1.00 x 1.21	25,4 x 30,7	.68	17,3	.64	16,3
.75	19,1	3921	3861	3921A	3861A	3921V*	3861V*	WCA 750-1750	1.15 x 1.45	29,2 x 36,8	.99	25,1		
1.00	25,4	3923	3867	3923A	3867A	3923V*	3867V*	WCA 1000-4000	1.98 x 2.24	50,3 x 56,9	1.37	34,8	1.26	32,0
1.50	38,1	3930	3868	3930A	3868A	3930V*	3868V*	WCA 1500-6000	2.42 x 2.95	61,5 x 74,9	1.77	45,0	1.31	33,3

Standard color gray or black.

*Tensile strength for VHB series is greater than wire retention of the clip.



- Releasable and reusable clips for easy wire bundle routing.
- Quick and easy installation - simply peel off backing and press into place.
- Seven sizes for bundles from .187" (4,7mm) to 1.500" (38,1mm) in diameter
- Clips without suffix have a load rating of 1 pound per square inch
- Clips with suffix "A" have a load rating of 6 pounds per square inch
- Clips with suffix "V" have a load rating of 105 pounds per square inch



HEYClip™ Locking Releasable Wire Clips - Adjustable

MAXIMUM BUNDLE DIAMETER RANGE A				PART NO.	DESCRIPTION	OVERALL HEIGHT D *		FOOTPRINT B x C	
Minimum		Maximum				in.	mm.	in.	mm.
in.	mm.	in.	mm.						
WCLP Series - Arrowhead Mount									
.47	11,9	.55	14,0	4335	WCLP 562	1.17	29,8	.50 x 1.24	12,7 x 31,5
.58	14,7	.75	19,1	4336	WCLP 750	1.36	34,5	.50 x 1.48	12,7 x 37,6
WCLA Series - Adhesive Mount**									
.22	5,5	.26	6,5	4323	WCLA 258	.74	18,8	.65 x .85	16,5 x 21,6
.31	7,9	.41	10,3	4324	WCLA 406	.90	22,8	.75 x 1.00	19,1 x 25,4
.47	11,9	.56	14,3	4325	WCLA 562	1.12	28,5	.75 x 1.24	19,1 x 31,5
.58	14,7	.75	19,1	4326	WCLA 750	1.32	33,6	.75 x 1.50	19,1 x 38,1
.87	22,2	1.00	25,4	4327	WCLA 1000	1.78	45,3	1.00 x 1.97	25,4 x 50,1

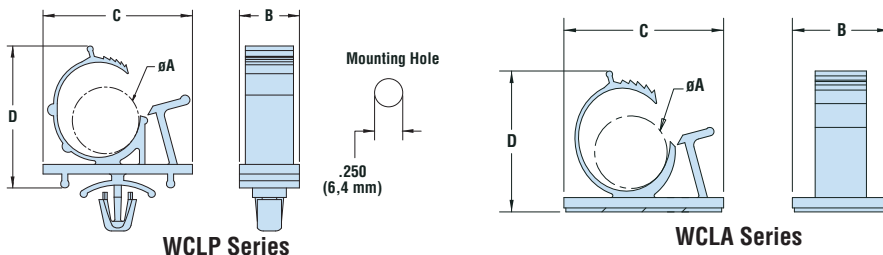
WCLP Series - Arrowhead Mount

.47	11,9	.55	14,0	4335	WCLP 562	1.17	29,8	.50 x 1.24	12,7 x 31,5
.58	14,7	.75	19,1	4336	WCLP 750	1.36	34,5	.50 x 1.48	12,7 x 37,6

WCLA Series - Adhesive Mount**

.22	5,5	.26	6,5	4323	WCLA 258	.74	18,8	.65 x .85	16,5 x 21,6
.31	7,9	.41	10,3	4324	WCLA 406	.90	22,8	.75 x 1.00	19,1 x 25,4
.47	11,9	.56	14,3	4325	WCLA 562	1.12	28,5	.75 x 1.24	19,1 x 31,5
.58	14,7	.75	19,1	4326	WCLA 750	1.32	33,6	.75 x 1.50	19,1 x 38,1
.87	22,2	1.00	25,4	4327	WCLA 1000	1.78	45,3	1.00 x 1.97	25,4 x 50,1

Standard color natural. *At maximum wire capacity. **Adhesive-Back is rubber adhesive only – 1/16" (1,6 mm) thick.



WCLP Series:

- Gather and route wires.
- Adjust to diameter needed to bundle.
- Push mount design allows for fast installation.

WCLA Series:

- Lock securely and easily. Re-open for routing changes.
- Ratcheting clip holds bundle securely in place.
- Good for high vibration applications. Once closed the clip will not open until tab is released.

Material	Nylon 6/6
Flammability Rating	94V-2
Temperature Range	-40°F (-40°C) to 185°F (85°C)

Adhesive Temperature Ranges***

Rubber Adhesive	50°F (10°C) to 155°F (68°C)
Acrylic Adhesive	10°F (-12°C) to 180°F (82°C)
VHB Adhesive	-40°F (-40°C) to 194°F (90°C)

***Low temperature reflects minimum application temperature for adhesives