

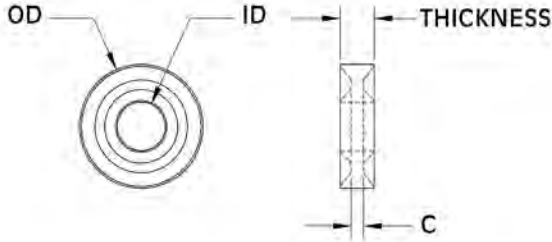
WASHERS, SHOULDER WASHERS & SCREW INSULATORS

SECTION IV

SEALING AND RETAINING RINGS WASHERS

Molded in **Natural Nylon 6/6**

These nylon washers are designed to prevent the loss of screws and bolts and to protect surfaces. The washer allows preliminary mounting of the bolt before securing with a nut. The tapered part of the washer provides locking to the screwed assembly. The tapered part of the washer cold forms and fully enters the pitch of the screw to provide sealing. The tapered part is a smaller diameter than the screw and is used to retain the screw before assembly. Compares to "Dubo" washers.

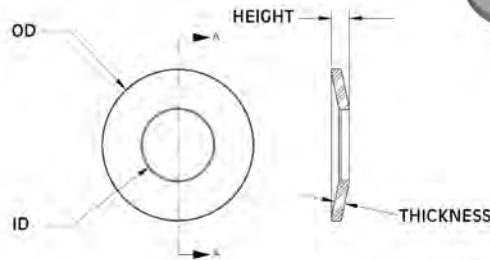


ITEM NUMBER	FITS SCREW	OD	ID	THICKNESS	C Ref.
16SRRW004209083	4	.321 (8,15)	.125 (3,20)	.088 (2,24)	.032 (0,81)
16SRRW006354150	6	.363 (9,22)	.154 (3,91)	.095 (2,41)	.037 (0,94)
16SRRW008374163	8	.380 (9,65)	.161 (4,09)	.103 (2,62)	.039 (0,99)
16SRRW010421200	10	.421 (10,69)	.200 (5,08)	.120 (3,05)	.060 (1,52)
16SRRW025500242	1/4	.500 (12,70)	.242 (6,15)	.139 (3,53)	.070 (1,78)
16SRRW025500256	1/4	.505 (12,82)	.256 (6,50)	.139 (3,53)	.070 (1,77)
16SRRW031637318	5/16	.640 (16,26)	.318 (8,08)	.158 (4,01)	.060 (1,52)
16SRRW037771381	3/8	.775 (19,70)	.381 (9,68)	.177 (4,50)	.070 (1,78)
16SRRW050100504	1/2	1.000 (25,40)	.504 (12,80)	.197 (5,00)	.079 (2,01)

SPRING WASHERS

Molded in **Natural Acetal**

Spring washers are molded in acetal material that has excellent spring properties, is light weight and inexpensive. The material is electrical and thermal insulating and corrosion resistant. Acetal lubricity allows use in rotating assemblies as well as underwater applications. Spring washers are used to eliminate rattles, take up tolerance variables and provide accurate spacing and tension. May be used singly in parallel, in series or in series parallel for a wide range of deflection and load capacity.



ITEM NUMBER	SCREW SIZE		OD	ID	HEIGHT	THICKNESS	MAX. REF. COMPRESSED OD	
	INCH	METRIC						
17SPRINGW100	6	M3.5	.316 (8,03)	.152 (3,86)	.045 (1,14)	.027 (0,69)	.330 (8,38)	
17SPRINGW200	8	M4	.297 (7,54)	.173 (4,39)	.046 (1,17)	.028 (0,79)	.310 (7,87)	
17SPRINGW300	10	M5	.365 (9,27)	.204 (5,18)	.053 (1,35)	.030 (0,76)	.372 (9,45)	
17SPRINGW320	10	M5	.416 (10,57)	.235 (5,97)	.062 (1,57)	.035 (0,89)	.430 (10,92)	
17SPRINGW360	1/4	M6	.448 (11,37)	.276 (7,01)	.062 (1,57)	.035 (0,89)	.485 (12,31)	
17SPRINGW400	1/4	M6	.564 (14,33)	.264 (6,71)	.066 (1,68)	.038 (0,97)	.579 (14,71)	
17SPRINGW500	5/16	M8	.660 (16,76)	.328 (8,33)	.080 (2,03)	.048 (1,22)	.680 (17,27)	
17SPRINGW600	3/8	M10	.848 (21,54)	.451 (11,46)	.095 (2,41)	.055 (1,40)	.865 (21,97)	
17SPRINGW650	3/8	M10	.848 (21,54)	.451 (11,46)	.080 (2,03)	.039 (0,99)	.865 (21,97)	