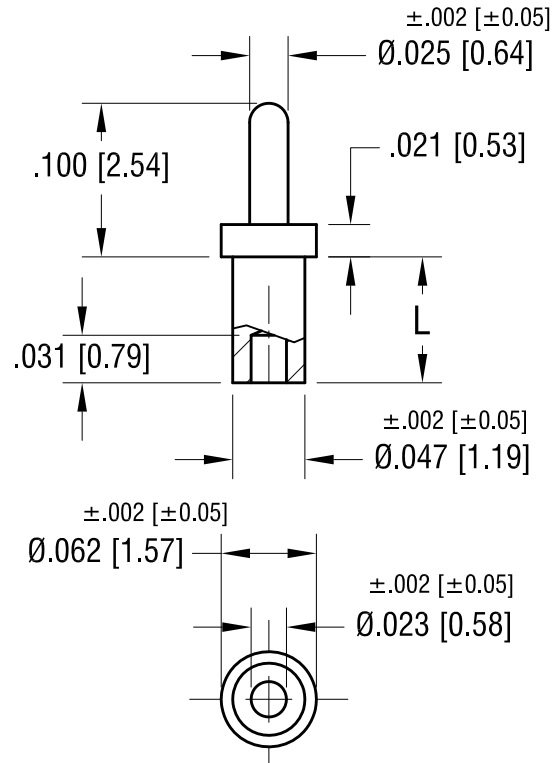


THIS DOCUMENT IS THE PROPERTY OF
KEYSTONE ELECTRONICS CORP. AND
SHALL NOT BE REPRODUCED, DISTRIBUTED
OR USED AS A BASIS FOR MANUFACTURE
WITHOUT PRIOR WRITTEN PERMISSION
FROM KEYSTONE ELECTRONICS CORP.

ACTUAL SIZE

P/N 1404-1



NOTE:
MOUNTING HOLE : $.052$ [1.32] DIA.

PART NO.	'L' DIM.
1404-1	$.051$ [1.30]
1404-2	$.082$ [2.08]
1404-3	$.113$ [2.87]
1404-4	$.145$ [3.68]

KEYSTONE ELECTRONICS CORP.

www.keyelco.com • NEW HYDE PARK, NY 11040 • Tel (516) 328-7500

PART NAME				MICRO PIN, SWAGE MOUNT			
MATERIAL				BRASS			
FINISH		DRN BY		DATE			
GOLD PLATE		BOONE		4.30.02			
		APP'D		SCALE			
		LN		8X			
TOLERANCES		INCH		[MM]		CODE	
DECIMAL		$\pm .005$		[± 0.13]		C	
ANGULAR		$\pm 1^\circ$		UNLESS OTHERWISE SPECIFIED		DWG NO.	
						1404-	

DATE	DESCRIPTION	REV.