

MISCELLANEOUS PRODUCTS

SECTION
X

CORD HOOK AND RETAINER

Molded in **Black U.V. resistant Impact modified Nylon**

Micro Plastics' cord hook is molded in U.V. resistant black impact modified nylon. Hook and retainer can be purchased separately or as a set not assembled. Hook is designed to be used with 1/4" diameter through 3/8" diameter cord. Simply loop the cord, insert through the guide area of the hook and pull down into the "V". Always tie a knot in the free end of the cord to prevent slippage. Cord assembly can be used for securing light cargo in cars, vans, trucks, and boats. The hooks will not scratch painted or decorative surfaces which makes it great for covers on boats and trailers.

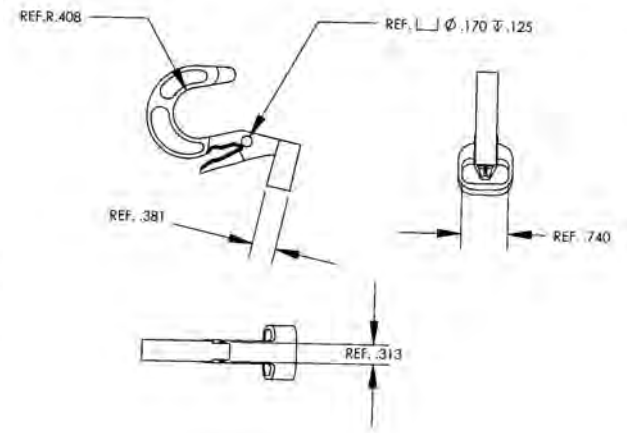
THE FOLLOWING SAFETY PRECAUTIONS MUST BE FOLLOWED WHEN USING CORD

- Intended for light duty use only.
- Wear eye protection - end of cord could come loose and cause serious eye or bodily injury.
- Always tie a knot in the free end of the cord or rope.
- Do not exceed 20 lbs. total force on hook.
- Not recommended for use with shock cord.



Watch Instructional Video

<mms://www.microplastics.com/productvideos/ShockCord.asf>



ITEM NUMBER	DESCRIPTION
45SKCDHK750RET	CORD HOOK RETAINER

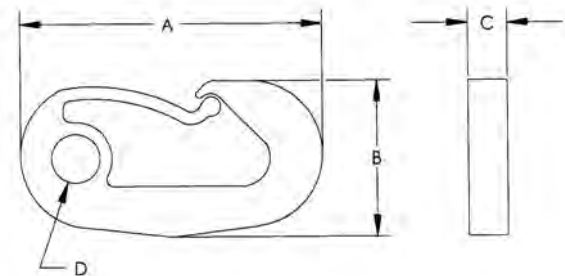
ITEM NUMBER	DESCRIPTION
45SKCDHK750	CORD HOOK

SNAP HOOKS

Molded in **Black UV Resistant Nylon**



Micro Plastics' Snap Hooks are ideal for light duty marine use, securing cargo to racks, miscellaneous automotive and home uses. The parts are made from UV resistant Nylon, which is perfect for outdoor use. The Snap Hooks will not scratch painted or decorative surfaces. Micro Plastics' design reduces the chance of accidental rope or eye release from snap end of hook.



ITEM NUMBER	A LENGTH	B WIDTH	C THICKNESS	D HOLE DIA.	MAX. ROPE DIA.	MAX. LOAD
* 45SNHK250	1 19/32" (40,46)	27/32" (21,41)	5/16" (7,92)	1/4" (6,35)	1/4" (6,35)	5 LBS.
* 45SNHK375	2 3/8" (60,33)	1 1/4" (31,75)	3/8" (9,52)	3/8" (9,52)	3/8" (9,52)	13 LBS.
** 45SNHK500	3 5/32" (80,16)	1-21/32" (42,06)	13/32" (10,31)	1/2" (12,70)	1/2" (12,70)	40 LBS.

* MOLDED NYLON 6/6 BLACK

** MOLDED IN BLACK IMPACT MODIFIED NYLON